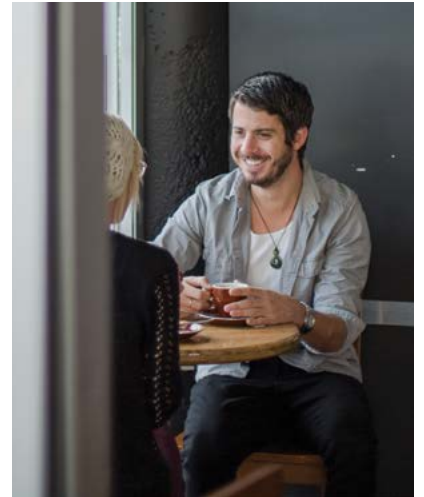


CONFERENCE & EVENTS PLANNER



PALMERSTON NORTH CITY
& Manawatu

CONTENTS

FIVE GREAT REASONS	3
CONVENTION BUREAU	5
KEY INDUSTRY SECTORS	7
GETTING HERE.....	10
CONFERENCE VENUES	12
RURAL RETREATS	28
ACCOMMODATION	33
ACTIVITIES	34
EVENTS	38
TE APITI - MANAWATU GORGE	40
DINING OPTIONS	43
A SELECTION OF COFFEE	46
PROFESSIONAL SERVICES	48
TESTIMONIALS	50

Please note this information in this document should be used as a guide only. To help ensure your safety we advise you review our safety page and contact the individual providers for up to date information on their compliance with all Health and Safety and regulatory requirements.

For more info, visit www.ManawatuNZ.co.nz/Safety

Produced June 2016 by

PALMERSTON NORTH
CONVENTION BUREAU

www.ManawatuNZ.co.nz



asteless
culous
rong
ng bread" is
ness for human
breaking the girl"





FIVE GREAT REASONS TO MEET HERE

Central Location

The unique geographic location of Palmerston North City provides a strategic advantage for conference organisers. The airport is only a short 10 minute drive from the CBD, with excellent flight connections to all major centres. The City is also located within a three hour drive of over one million people, making it an easy place to drive to for many.

Variety of Venues

Palmerston North City offers a variety of options when it comes to convention venues, including some very special and unique locations. The choice includes purpose-built convention centres, major hotel chains, an iconic brewery, an Edwardian theatre, an international motorsport track and a country club where you can step out of the meeting room straight onto the golf course or driving range.

Compact City

Once you arrive in Palmerston North City there is very little need for transport as the city is very compact, reducing cost for organisers and delegates. All accommodation options offer free car parking and are within close walking distance of most conference venues, restaurants, shops and cafes.

Strong Industry Sectors

The City is recognised as a centre of excellence for research, technology and education, and has a proud history of nurturing entrepreneurs and innovators. It is home to more than 70 educational and research institutions including Linton Military Camp, Ohakea Airforce Base, MidCentral Health and the Sport and Rugby Institute. The Manawatu Region, due to its central location, is also an important distribution hub with a large logistics and supply chain sector.

Affordability

Palmerston North City offers a great return-on-investment for organisations running their conference here, with excellent value across a range of venues, accommodation and conference services. There is minimal or no need for transport while in the City, due to the close proximity of facilities and low taxi fares, resulting in great savings for both conference organisers and delegates.



PALMERSTON NORTH CONVENTION BUREAU

If you're organising a large conference, convention, an association meeting or a major exhibition, Palmerston North Convention Bureau are here to bring Palmerston North's vibrancy to your event. We offer impartial, expert knowledge and services to help you make the best choices and give you the best possible value, resulting in a superb experience for your delegates.

Conference Bids

We work alongside you assisting in gathering quotes, securing support and delivering a compelling professional conference bid document.

Venue Search

We offer options of venues that suit your needs and organise site visits for you to see them first hand.

Group Accommodation Booking Service

We can take away the headaches of finding somewhere for delegates to stay by assisting you with organising accommodation.

Activities, Tours, Team Building, Partner Programmes

We have a large range of fun activities for your delegates and partners, tailored to conference types. Who said conferences were all hard work!

Plus

- Online image gallery
- Regional information for delegate packs
- Familiarisation opportunities
- VIP gift ideas

PALMERSTON NORTH
CONVENTION BUREAU

Contact Details

P +64 6 350 1810

E phil@ManawatuNZ.co.nz

www.ManawatuNZ.co.nz



KEY INDUSTRY SECTORS

Palmerston North City and Manawatu offers a wide variety and accessibility to specialist industries. The Manawatu economic zone includes a population base of 170,000 residents, making it small enough to be connected and efficient, but of sufficient scale to be effective and meaningful. Tap into leading professionals to make your next event a great success.

Agriculture

The agricultural sector underpins the economy of the wider Manawatu Region, supplying the food processing industry, generating events such as the New Zealand Agri Investment Week/ Central District Field Days, and operating as an important part of the New Zealand dairy industry. A wide range of horticulture also flourishes here, due to our quality soils and benign climate. The Feilding Saleyards are the largest in the southern hemisphere and have a huge impact on the district. Local farmers also work with research institutes with an aim of furthering farm system innovation.

specialist health services is reflected in private hospitals, aged care facilities and a wide range of private health care specialists located in the City.

Science & Research

Research and development is important for achieving improvements in our quality of life and future prosperity. The Region is home to many world-class research organisations, and there is a particular focus on food innovation and agribusiness research.

FoodHQ

Palmerston North City and Manawatu is an emerging world centre for food innovation, led by the launch of FoodHQ, a collaborative partnership between a number of vital parties within New Zealand's agri-science sector. Partners include AgResearch, Massey University, Plant & Food Research, Fonterra, the Riddet Institute, Landcare Research, Institute of Environmental Science and Research, Assure Quality, the Manawatu Bio Commerce Centre, PNCC and MDC. This partnership operates from the science campus based in Palmerston North City.

Healthcare & Social Assistance

The largest employer in Palmerston North is the healthcare and social assistance sector, employing approximately 15 percent of all employees in the City and 11 percent of national employment in the sector. Many organisations in these areas provide services to New Zealand and the Manawatu Region that are crucial to the wellbeing and prosperity of its citizens. This sector has experienced significant growth in the last decade, being the largest generator of new jobs for the Region. This concentration of



Veterinary

Massey University Palmerston North campus, is home to New Zealand's largest Veterinary Teaching Hospital. This state-of-the-art facility offers New Zealand's most comprehensive veterinary expertise. Attached to Massey University's veterinary school is 'Wildbase Hospital' which is New Zealand's only dedicated wildlife hospital, and is having a huge impact on the survival of some of New Zealand's most endangered birds and animals. Wildbase Hospital offers four areas of wildlife health: hospital, oil response, research and pathology.

Distribution & Logistics

The logistics and supply chain sector comprises wholesale trade, transport, postal, warehousing and non-store retailing activities. The sector currently accounts for just over one in ten jobs in the Region. Part of the success of the Manawatu Region as a logistics hub is the ease of business for logistics operations. Trucks can get in and out of the Region in any direction relatively quickly at any time of the day, and there is good rail access. State Highways 1, 2 and 3 intersect in the Region offering connections to Wellington, the Wairarapa, Hawke's Bay and Taranaki regions. Rail offers a significant freight hub in Palmerston North City with rail lines to the west and east connecting with the North Island main trunk line. Palmerston North Airport is located centrally in the North Island and New Zealand. Businesses are located close to the city airport, which is rarely closed, and is very efficient. As one of three significant domestic freight hubs in New Zealand it offers easy road access for freight and lacks restriction on hours of operation.

Education

The City is home to a number of major educational institutions, including Massey University, UCOL (Universal College of Learning), Te Wananga o Aotearoa and IPU (Institute of the Pacific United). Massey University is one of the world's leading agri-food universities and a founding partner of the Food Innovation Network, working with industry to support New Zealand's food industry – a sector the University has supported for more than 80 years.



Massey University is highly rated in design, visual arts, nursing, public health, veterinary science, agriculture and other applied biological sciences. It is ranked in the nation's top three universities for engineering and technology, physics, sport science and statistics. New Zealand's most innovative, and connected University, Massey is a leader in distance and blended education with more than half of its students studying part-time or extramurally. The University has now taught more than 250,000 students by distance in New Zealand and across the world. Providing accessible research-led education for more than 50 years and remaining closely connected to its regional communities makes Massey truly New Zealand's University.

Defence & Government

The defence sector plays a major role in the local economy with two defence bases (Linton Military Camp and RNZAF Base Ohakea) located in Manawatu. Linton Military Camp is now the largest in the country with both military and civilian personnel, and when combined with staff at the Ohakea base, the Defence Force accounts for approximately 5 percent of the total Manawatu workforce. Due to our central location, transport efficiencies and educated labour force, Palmerston North City has also become home to a number of government department operations, covering a wide geographical area.



GETTING HERE

Centrally located in New Zealand

Palmerston North City's central location places it within a three-hour drive of over one million people, making it an easy place to travel to by road and air.

Air

Palmerston North Airport has increased its flight services with three airlines, Jetstar New Zealand being the newest addition, flying in and out of the city. This exciting news has seen significant improvements in availability and prices of flights.

Palmerston North Airport is only 5 kilometres, or 10 minute drive from the City centre. It is a gateway to the Region with excellent flight schedules from all major centres in the country.

Taxi, bus and shuttle services to the City depart from in front of the airport terminal building. If you require a hire vehicle, many of the major New Zealand vehicle rental companies are represented at the airport.

Car

Accessing Palmerston North City is easy from all directions, and if you take our suggested scenic routes you'll find that the Region provides a spectacular driving experience. From Auckland/ Taupo on SH1 turn off just south of Mangaweka at Vinegar Hill onto the 'Stormy Point Route' to see dramatic landscapes and countryside.

Travelling from Wellington on SH1, turn right just before Levin onto SH57 which will give you the option to enjoy a stop off at the village of Shannon for designer clothing, local art and a good coffee. Upon arriving in the City, you will find free parking at all accommodation providers and, to make things hassle free, most venues are within walking distance of the CBD.





CONFERENCE VENUES

Palmerston North offers a variety of options when it comes to convention venues, including some very special and unique locations. The choice includes purpose-built convention centres, major hotel chains, an iconic brewery, motels, Edwardian theatre, an international motorsport track and a country club where you can step out of the meeting room and straight onto the golf course or driving range.

With more than 35 unique venues in the City and wider Manawatu Region, there is a superb range of options to make your next event a great success.



Manawatu Golf Club



Venue Capacity (without accommodation)

Venue	Meeting Rooms	Theatre	U-shape	Boardroom	Classroom	Banquet	Qualmark Rating
Central Energy Trust Arena	14	3000	50	40	1200	2000	
Awapuni Function Centre	9	700	40	28	400	550	
Caccia Birch House	8	70	20	20	28	100	
Downtown Cinemas & Cinema Gold	10	278	-	-	-	-	
Feilding Civic Centre	3	750	200	100	250	500	
Focal Point Cinema	2	40	-	-	-	-	
Manawatu Golf Club Functions & Events	4	200	-	-	80	140	
Manfeild	11	200	30	50	80	150	
Palmerston North Convention Centre	6	550	50	34	250	500	
Palmerston North Airport	2	25	12	10	12	-	Endorsed
Regent on Broadway	4	1393	30	40	90	300	
Te Manawa	4	100	50	40	60	60	Endorsed
The Chalet	1	100	40	-	80	120	
The Cooperage	2	80	30	10	-	60	
The Globe Theatre	3	200	-	-	-	-	
The Herb Farm	2*	40	20	20	25	70	
The Lake House	1*	240	-	-	-	200	
Tui Brewery	4	120	70	14	60	180	Endorsed
Wharerata	7*	100	35	30	60	90	
The Factory	2	50	-	20	-	-	

Venue Capacity (with accommodation)

Venue	Meeting Rooms	Theatre	U-shape	Boardroom	Classroom	Banquet	Qualmark Rating	Rooms
@ The Hub	1	-	-	14	-	-		166
Accommodation Gateway Motel	1	50	20	20	30	40		22
Aspree Motor Lodge	1	30	20	20	20	20		39
Awatea Park Motel & Conference Centre	1	40	25	30	30	50		16
Bella Vista Motel	1	30	18	20	20	-	4 Star	18
BK's Motor Lodge	1	30	16	18	16	-	5 Star	35
Broadway Motor Inn	1	20	-	12	-	-		12
Camelot Motor Lodge	1	40	26	20	20	20		20
Carramar Motor Inn	1	40	15	15	20	-		39
Chancellor Motor Lodge & Conference Centre	1	50	25	25	25	-		18
Colonial Court Motel & Conference Centre	1	45	24	24	34	30	4 Star	13
Copthorne Hotel	4	150	60	42	60	120		89
Cornwall Motor Lodge	1	20	12	12	14	-		27
Distinction Hotel & Conference Centre	4	500	60	40	150	400		85
Highden Manor Estate	3*	100	35	30	45	80		26
Hiwinui Country Estate	1	-	-	12	-	12	5 Star	1
Hotel Coachman	5	200	40	25	75	150		72
Illuzzions Motel	1	40	20	20	20	-		13
Kauri Court Motel	1	25	18	18	-	-	4 Star	12
Mairenui Rural Retreat	1	-	-	14	-	-		11
Makoura Lodge	2	120	50	60	60	120	4 Star	14
Masters Hall	3	80	60	60	50	80		16
Pavilion Motel & Conference Centre	1	50	25	30	30	40		17
Rathmoy Estate	2	20	-	20	-	20		5
River Valley	1	10	10	10	10	10		17
Shadzz Motel & Conference Centre	1	40	20	20	30	20	4 Star	14
Sport and Rugby Institute	3	120	20	20	80	100		25

* Outdoor Marquee Available

PALMERSTON NORTH CONVENTION CENTRE



Palmerston North Convention Centre is a purpose-built conference facility with sophisticated audiovisual, communications and information technology which helps organisers to produce professional events with ease and significantly reduces additional costs.

The Convention Centre is situated in the heart of Palmerston North City; ideally suited for conferences, exhibitions, seminars, formal dinners, cocktails functions, and weddings. With a perfect central location the Palmerston North Convention

Room	Theatre	U-shape	Boardroom	Classroom	Banquet
Elwood Room	550	50	34	250	500
Seminar Room	120	30	34	60	70
Conference Room	480	50	-	200	300
Gallery	100	20	30	60	70
Boardroom	-	-	18	-	-
Meeting Room	80	20	30	40	-



+64 6 358 0000

www.venuespn.co.nz

info@ccpn.co.nz

354 Main Street,
Palmerston North

AWAPUNI FUNCTION CENTRE



Awapuni Function Centre are experts at attending to every aspect of your event. Giving you the space to conduct business, and the means to make your point through a range of spacious rooms.

A premier venue in Palmerston North City and the central North Island that can host multi-day conferences and meetings that require breakout rooms, it also has the ability to host

dinner, trade show presentations and cocktail parties under one roof.

Awapuni is a stunning venue with a large number of purpose built rooms, it has a picturesque outlook over the race course and the mountain ranges, providing a tranquil and refreshing setting.

Room	Theatre	U-shape	Boardroom	Classroom	Banquet
Silks Lounge	700	40	28	400	550
Feilding - Marton Lounge	60	29	28	30	60
Feilding Lounge	40	14	16	20	40
Marton Lounge	40	14	16	20	40
Rangitikei Lounge	40	14	16	20	40
Public Terrace	100	14	28	70	300
Stewards Lounge	60	15	16	40	70
Awapuni Lounge	150	23	28	90	200
Eulogy Lounge	400	40	28	300	450
Birdcage Lounge	75	22	28	60	100



+64 6 354 2780

www.creativecatering.co.nz

info@creativecatering.co.nz

Awapuni Racecourse,
Racecourse Road,
Palmerston North

CENTRAL ENERGY TRUST ARENA



Central Energy Trust Arena has a deserved reputation as being one of the busiest and most versatile events and activities complexes in New Zealand.

Central Energy Trust Arena boasts a total of 18 indoor and outdoor venues and with only a 10 minute walk to the CBD, Arena is ideally located and easily accessible for event organisers and delegates. It has a large number of spaces

offering the ability to accommodate your conference, trade show, break out rooms and a formal dinner all in one place.

Central Energy Trust Arena can offer you many options for your next conference, exhibition or meeting to help create a very successful event. Whether you need a small intimate space, a large open venue, or a corporate lounge overlooking the ranges, Arena has it all.

Room	Theatre	U-shape	Boardroom	Classroom	Banquet
Steelfort Corporate Lounge	200	40	-	80	200
Arena 2	3000	-	-	-	2000
Arena 2 Corporate Lounges	80	30	-	50	50
Arena 3	1100	-	-	-	850
B&M Centre	2500	-	-	-	1000
Referees Lounge	70	-	-	-	50
Central Energy Trust Stadium	200	40	-	-	200



THE REGENT ON BROADWAY



The Regent Theatre opened on 4 July 1930 and was described as “The Theatre Beautiful”, and that it was creating “an entirely new standard of entertainment”.

Today, as a 1,393 seat venue, the Regent on Broadway can still claim to be one of New Zealand’s finest performing arts facilities, indeed one of the top four in the country.

An amazing location that has a timeless elegance with plenty of space and rooms for breakouts, and is in the heart of the CBD.

Make an impression with a gala dinner on the majestic Regent on Broadway's grand stage.

Room	Theatre	U-shape	Boardroom	Classroom	Banquet
Theatre	1393	-	-	-	250
Regency Room	150	45	30	80	130
Rehersal Room	200	55	30	130	140
Green Room	50	24	20	24	-



+64 6 356 1505

www.venuespn.co.nz

office@arenamanawatu.co.nz

61 Pascal Street,
Palmerston North

+ 64 6 350 2100

www.regent.co.nz

manager@regent.co.nz

63 Broadway Avenue,
Palmerston North

MANFEILD



Manfeild is a truly unique venue, considered one of New Zealand's most diverse event centres. Nestled in 88 hectares of parkland, it offers a flexible range of facilities that can be tailored to your individual needs.

Their versatile conference spaces can cater to any sized event from 10 to 5,000 and the team of dedicated staff will work with you to ensure your event exceeds expectations. In addition to their expansive corporate suite, overlooking 30 hectares of grassland and internally to the stadium, there are five modern

adjoined suites overlooking the Manfeild Circuit, offering a different occupancy opportunity ranging from 40 to 160 person capacity. The view over the circuit provides a reminder that Manfeild can offer the option of corporate days combining the added thrill of a high-octane excitement track activity - an experience unique to Manfeild.

Manfeild conference facilities are located in Feilding, an easy 10 minute commute from Palmerston North Airport.

Room	Theatre	U-shape	Boardroom	Classroom	Banquet
Stadium	5000	-	-	-	1000
Stadium Suites (1,2 & 3)	200	30	50	80	150
Stadium Suite 1	80	20	20	45	50
Stadium Suite 2	80	20	20	45	50
Stadium Suite 3	80	20	20	45	50
Toyota Suite	100	24	20	20	80
Higgins Suite	40	20	20	16	60
Stewarts Suite	30	20	20	16	60
Manfeild Suite	20	12	10	10	-
HFT Motorsport	20	12	10	10	-
Redcraze Room	125	24	20	60	120
Ruahine Room	125	24	20	60	120



HOTEL
COACHMAN



A contemporary, boutique-style hotel which has superb conference spaces and is located only moments away from the CBD. Hotel Coachman Palmerston North offers the perfect venue for corporate meetings, seminars and private dining. The tranquil environment lends itself to a creative and productive getaway.

The conference team at Hotel Coachman can plan and coordinate your event, making your job stress free. They have a dedicated Conference Manager who can create a unique experience to remember. They will work closely with you,

ensuring all of your requirements are met. Their conference and function services offer a choice of seven meeting and function rooms, a dedicated Function Manager, full selection of AV and media equipment, catering and a selection of hotel and motel accommodation.

Hotel Coachman is a boutique-style hotel and motel with an exceptional range of facilities, including conference rooms, a gym, outdoor swimming pool, spa pools, sauna, beauty salon and hairdresser.

Room	Theatre	U-shape	Boardroom	Classroom	Banquet
Huntermville & La Patio Club	200	-	-	75	150
Huntermville Room	150	40	25	60	100
McKelvie Room	50	25	20	20	50
La Patio Club Room	20	12	12	12	20
Green Room	75	30	25	25	60



+ 64 6 323 7444



www.manfeild.co.nz



experience@manfeild.co.nz



South Street,
Feilding



+64 6 356 5065



www.coachman.co.nz



salesmanager
@coachman.co.nz



140 Fitzherbert Avenue,
Palmerston North

DISTINCTION PALMERSTON NORTH



This elegant 4-star hotel is situated in the hub of Palmerston North City's buoyant CBD. It is a few minutes walk from lively cafes, shops, theatres, art galleries, museums and the Convention Centre. The five storey Distinction Hotel boasts 85 well appointed, modern guest rooms; it is the ideal accommodation choice for the smart traveller who appreciates great value and convenience.

Room	Theatre	U-shape	Boardroom	Classroom	Banquet
Carlton 1	250	60	40	150	200
Carlton 2	250	60	40	150	200
Carlton Ballroom 1&2	500	-	-	-	400
Lombard	40	24	30	30	40
Boardroom	-	-	10	-	-

* Outdoor Courtyard Available





+64 6 355 5895



www.distinctionhotels.co.nz



reservations@distinctionpalmerstonnorth.co.nz



175-185 Cuba Street,
Palmerston North

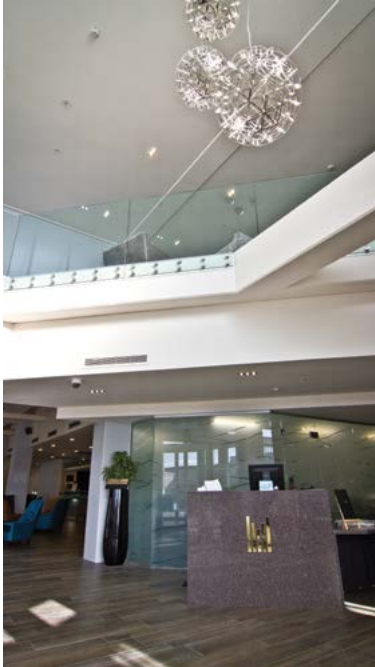
COPTHORNE HOTEL



Experience a fresh new design at Copthorne Hotel Palmerston North. All 89 fully refurbished rooms, including seven suites, have been redesigned with your comfort in mind. Contemporary in style, yet warm and welcoming, Copthorne Hotel Palmerston North offers a unique and relaxing environment for hosting your next meeting or event.

The Steeple Conference Centre offers four well-appointed rooms, all air-conditioned with optimum flexibility in terms of style, seating arrangements and presentation facilities. Big, small, simple or extravagant, from business meetings and conferences to life's milestone celebrations, our experienced conference team are experts at co-ordinating professional events.

Room	Theatre	U-shape	Boardroom	Classroom	Banquet
Avenue Room	60	40	42	65	120
Steeple Room	130	30	36	46	110
Boardroom	30	15	18	18	-
Ferguson Room	70	25	30	40	80
Armada Room	180	50	50	70	180





+64 6 356 8059



www.millenniumhotels.co.nz/copthornepalmerstonnorth/



copthorne.palmerston@millenniumhotels.co.nz



110 Fitzherbert Avenue,
Palmerston North

SPORTS & RUGBY INSTITUTE



Shaped like a silver fern, the architecture and interior design of this worldclass facility is superb. A sought after venue for the secluded atmosphere and pristine scenery of the immaculately groomed rugby fields, shelter belts and rolling hills beyond.

Room	Theatre	U-shape	Boardroom	Classroom	Banquet
Conference Room	100	20	20	80	100
Syndicate Room	40	20	20	50	30
Boardroom	-	-	20	-	-


+64 6 350 5844


www.sportandrugbyinstitute.co.nz


sri@massey.ac.nz


Albany Drive, Massey University, Palmerston North

WHARERATA



The historic homestead of Wharerata is set in magnificent turn of the century gardens, providing a stunning venue for indoor and outdoor events. Delegates will be treated to superb catering, stylish surroundings and wonderful Manawatu hospitality. Situated in the heart of Massey University, 5km from the CBD.

Room	Theatre	U-shape	Boardroom	Classroom	Banquet
Russell Room	100	35	30	60	100
Boardroom	60	35	25	40	30
Rata Room	25	12	12	12	12
Meeting Room 1	-	-	10	-	-
Meeting Room 2	-	-	6	-	-
Snug	-	-	-	-	12
Dining Room	30	20	12	20	40

* Outdoor Marquee Available


+64 6 350 5088


www.wharerata.co.nz


info@wharerata.co.nz


Massey University, Palmerston North

TUI BREWERY



Now attracting more than 40,000 visitors each year, the Tui Brewery has grown into an experience. The conference centre that is Tuiversity, function facilities, tours, tastings, a museum, bar, and cafe, the Tui Brewery is a venue with a difference.

Room	Theatre	U-shape	Boardroom	Classroom	Banquet
The Flagon Room	-	-	-	-	180
Tuiversity	70	70	30	60	100


+64 6 376 0815


www.tui.co.nz


hq@tui.co.nz


State Highway 2, Mangatainoka

DOWNTOWN CINEMAS



The complex offers 10 cinema spaces ranging in size, all in theatre style, perfect for your next presentation, launch or seminar. Downtown Cinemas and Cinema Gold provide superb surroundings, with great catering options, luxury seating, and state of the art audio and visual entertainment.

Room	Theatre
Cinema 1	141
Cinema 2	130
Cinema 3	153
Cinema 4	156
Cinema 5	84
Cinema 6	127
Cinema 7	119
Cinema 8	278
Cinema Gold 1	68
Cinema Gold 2	27


+64 6 355 5335


www.dtcinemas.co.nz


manager@dtcinemas.co.nz


30-60 Broadway Ave, Palmerston North

CACCIA BIRCH HOUSE



Caccia Birch House is a magnificent historic homestead with a range of spaces ideal for seminars, meetings and weddings. Each elegantly decorated room has a beautiful vista over the expansive gardens and Centennial Lagoon. Located 2km from the CBD in the beautiful suburb of Hokowhitu.

Room	Theatre	U-shape	Boardroom	Classroom	Banquet
Awhina Room	65	20	28	28	100
Lord Plunket	45	20	24	20	45
Strang	45	15	18	18	40
Woodhey	12	-	10	-	-
Nannestad	25	15	15	12	25
Coach House Lounge	12	10	12	9	-
Guest	-	9	9	9	-
Conservatory	10	-	-	-	-

+64 6 357 5363

www.caccia-birch.co.nz

manager@caccia-birch.co.nz

130 Te Awe Awe St, Palmerston North



With seating for up to 80 in a theatre configuration, or 60 when seated at tables, the conference centre has got everything your business needs to impress. Treat your guests with The Cooperage experience of great service in a tasteful environment. With air conditioning, a licensed bar, full catering on site and easy, free parking: The Cooperage Conference Centre is a perfect place to do business or pleasure. Business friendly essentials include WiFi, HDTV with laptop connection, phone line, and presentation aids including flip charts and whiteboards.

Room	Theatre	U-shape	Boardroom	Classroom	Banquet
Conference Room	80	40	20	50	60
Boardroom	-	-	10	-	-
Cafe	-	-	-	-	50

+64 6 354 5124

www.thecooperage.co.nz

info@thecooperage.co.nz

723 Main Street, Palmerston North

THE COOPERAGE CAFE & CONFERENCE CENTRE



THE GLOBE THEATRE



The Globe Theatre is a fantastic venue, its main theatre, which seats 200 people, has tiered seating suitable for corporate events, and is fully equipped with lighting and audio. All seats have a great line of sight to the stage and they have world class acoustics.

In mid 2014 The Globe Theatre re-opened after major redevelopment through out and with the exciting addition of a new 100 seated auditorium and welcoming foyer space.

Room	Theatre
Theatre	200
Rehersal Room	40
Auditorium	100

+64 6 351 4409

www.globetheatre.co.nz

theglobe@insipre.net.nz

Cnr. Main and Pitt St, Palmerston North

FEILDING CIVIC CENTRE



The Feilding Civic Centre is a multi-purpose venue in central Feilding. An important part of the local community since the 1950s and recently refurbished, this is an excellent facility, with a range of spaces for all types of functions.

Room	Theatre	U-shape	Boardroom	Classroom	Banquet
Stadium	750	200	100	250	500
Concert Chamber	430	50	30	100	100
Cedar Room	560	15	20	20	20

+64 6 323 8306

www.feildingciviccentre.org.nz

manager@feildingciviccentre.org.nz

84 Aorangi Street, Feilding

TE MANAWA



As the cultural heart of the city, Te Manawa draws art, science and history together, recognising the uniqueness of each area and reflecting our growing Region and its people. Te Manawa offers venue hire for varied events including meetings, conferences and presentations, as well as small cocktail functions and dinners.

Room	Theatre	U-shape	Boardroom	Classroom	Banquet
Gallery 5	100	50	40	60	60
Wilkins Theatrette	70	25	30	20	-
Atrium	60	-	-	-	40
Foyer	60	-	-	-	50

+64 6 355 5000

www.temanawa.co.nz

enquiries@temanawa.co.nz

326 Main Street, Palmerston North

THE CHALET



Overlooking the lagoon, The Chalet is a versatile venue in a great setting. With on-site catering and nearby accommodation and attractions. The Chalet is suitable for meetings, conferences or dinners.

Room	Theatre	U-shape	Boardroom	Classroom	Banquet
The Chalet	100	40	-	80	120

+64 6 357 6008

www.boatshedcatering.co.nz

lisa@boatshedcatering.co.nz

Centennial Drive, Hokowhitu Palmerston North

MANAWATU GOLF CLUB FUNCTIONS & EVENTS



The state of the art clubhouse provides separate function areas for events from 10 - 200 people. Floor to ceiling windows provide excellent natural lighting, and a complete range of audio-visual and presentation equipment will enable you to effectively communicate with your audience. With ample free car parking, superb on-site catering and bar facilities; the Manawatu Golf Club Functions & Events is your one stop shop.

Room	Theatre	U-shape	Boardroom	Classroom	Banquet
Conference 1	150	40	-	60	60
Conference 2	70	40	-	24	48
Conference 1 & 2	200	-	-	80	140
ANZ Lounge	50	30		40	-
Boardroom	-	-	10	-	-
Hokowhitu Cafe	80	30	-	30	-

+64 6 357 8793

www.manawatugolfclub.com

office@manawatugolfclub.com

19 Centennial Drive, Palmerston North

THE FACTORY



The Factory's conference rooms' host a range of up-to-the-minute technology for your conference needs. This includes video conferencing capability, projection displays and surround sound. The two rooms can also be joined to create one larger space, and multiple room configurations.

From a simple morning tea to a specially designed menu, catering can be arranged to suit any special dietary requirements your group may have complete with divine barista-made coffee.

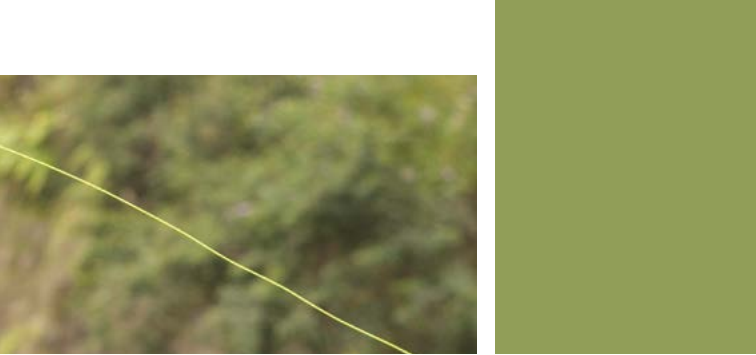
Room	Theatre	U-shape	Boardroom	Classroom	Banquet
The Curing Room	25	-	12	-	-
The Testing Room	12	-	8	-	-
The Curing/Testing	50	-	20	-	-

+64 6 353 3100

www.thefactorynz.co.nz

bookme@thefactorynz.co.nz

21 Dairy Farm Road, Palmerston North



RURAL RETREATS

Manawatu is a region spoilt for rural retreat venues only a stone's throw away from the hustle and bustle of its urban centre in Palmerston North City.

Whether you're wanting somewhere to have that executive two-day strategy meeting or to reward your delegates with some exciting outdoor options (including: rafting, pheasant shooting, golfing, 4wd tracks, quad-biking, jet boating and horse trekking) here are some easily accessible locations.

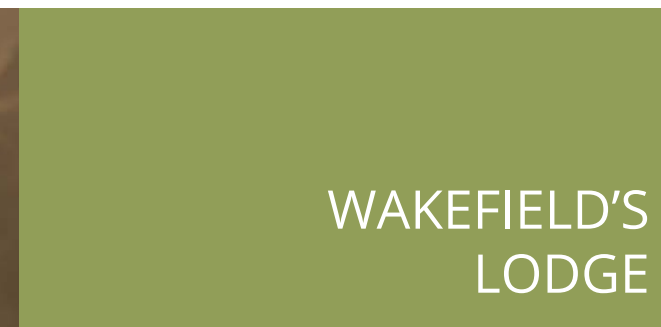


Share an adventure and develop a sense of renewal at River Valley, a rural retreat in a magic setting by the picturesque Rangitikei River. Originally a rafting company, the business has grown and now features a luxury lodge, rafting and horse treks. Facilities also include infrared and traditional steam saunas with an outdoor shower and a beauty therapy room.

+64 6 388 1444	www.rivervalley.co.nz	thelodge@rivervalley.co.nz	RD2, Taihape



Rathmoy



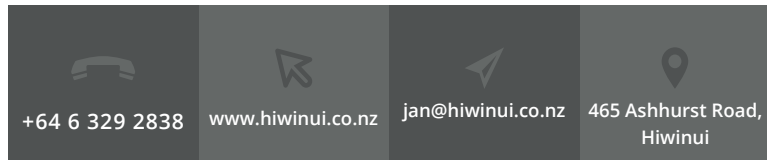
An exquisite country villa homestead with extensive gardens and gorgeous manor style accommodation. Boardroom style meeting space with veiws out over the property, with many comfy break out spaces from a formal lounge area to the outdoor deck, this is a great space to get away. Tennis court and rackets are on-site for a hit during breaks or meander through the gardens of this large country property. Only seven minutes to town this is a great place to break out from the office or give your conference delegates a country retreat. Catering and accommodation upon request.

+64 6 354 3367 or +64 27 457 9621	www.manawatunz.co.nz/wakefields	supendergast@xtra.co.nz	8 The Bush Track, Aokautere

HIWINUI COUNTRY ESTATE



Hiwinui Country Estate is a private rural setting offering a tranquil and personalised experience, with boutique luxury accommodation ideally suited to corporate retreats. This family-run estate is surrounded by farmland, which has been in the family since 1886.



ORLANDO COUNTRY CLUB - THE LAKE HOUSE



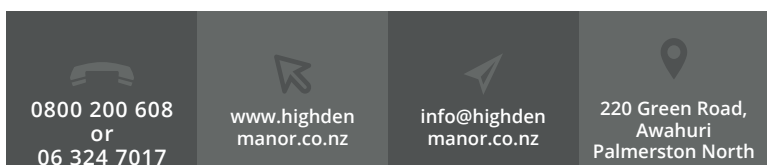
Escape the busy city life and immerse yourself in the beautiful countryside in just three minutes from the edge of the City. The Lake House is the perfect location to host your next corporate cocktail evening or conference breakout. Enjoy and unwind playing on their exceptional nine hole golf course catering to any skill level or challenge yourselves on the full length driving range.



HIGHDEN MANOR



Set in 36 acres of manicured gardens and native forest, this historic boutique hotel has been fully restored to its original grandeur. An ideal venue for corporate retreats and elegant functions. Located in a secluded rural area just 15 minutes drive from Palmerston North City.



ORLANDO COUNTRY ESTATE



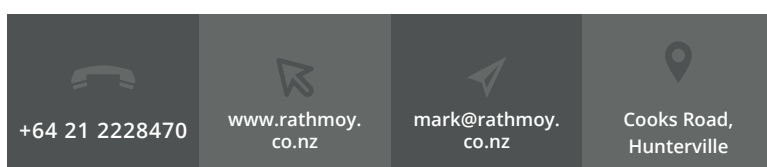
A beautiful property with rolling hills, native bush and stunning views from mountain to sea - Orlando Country is ideal for corporate events and retreats. They offer a range of activities, from jet boating and helicopter rides, to golf and clay bird shooting.



RATHMOY



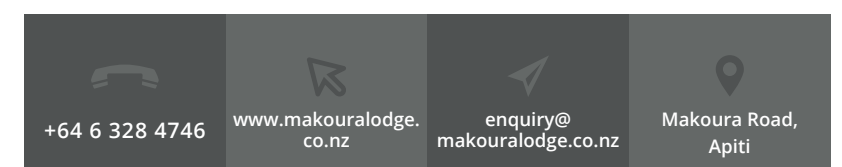
Rathmoy offers unique New Zealand country hospitality and a range of exhilarating outdoor activities, from jet boating and kayaking, to fishing and pheasant shooting. Surrounded by a 1000 hectare sheep and cattle property and the spectacular Rangitikei River.



MAKOURA LODGE

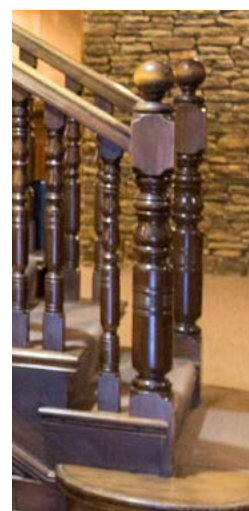


Makoura Lodge offers modern facilities in the beautiful foothills of the Ruahine Ranges. Get off the beaten track and enjoy a range of team building activities available, including 4WD, quad biking and a variety of games.





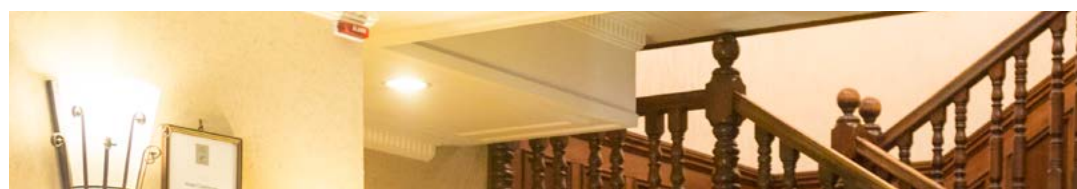
Copthorne Hotel



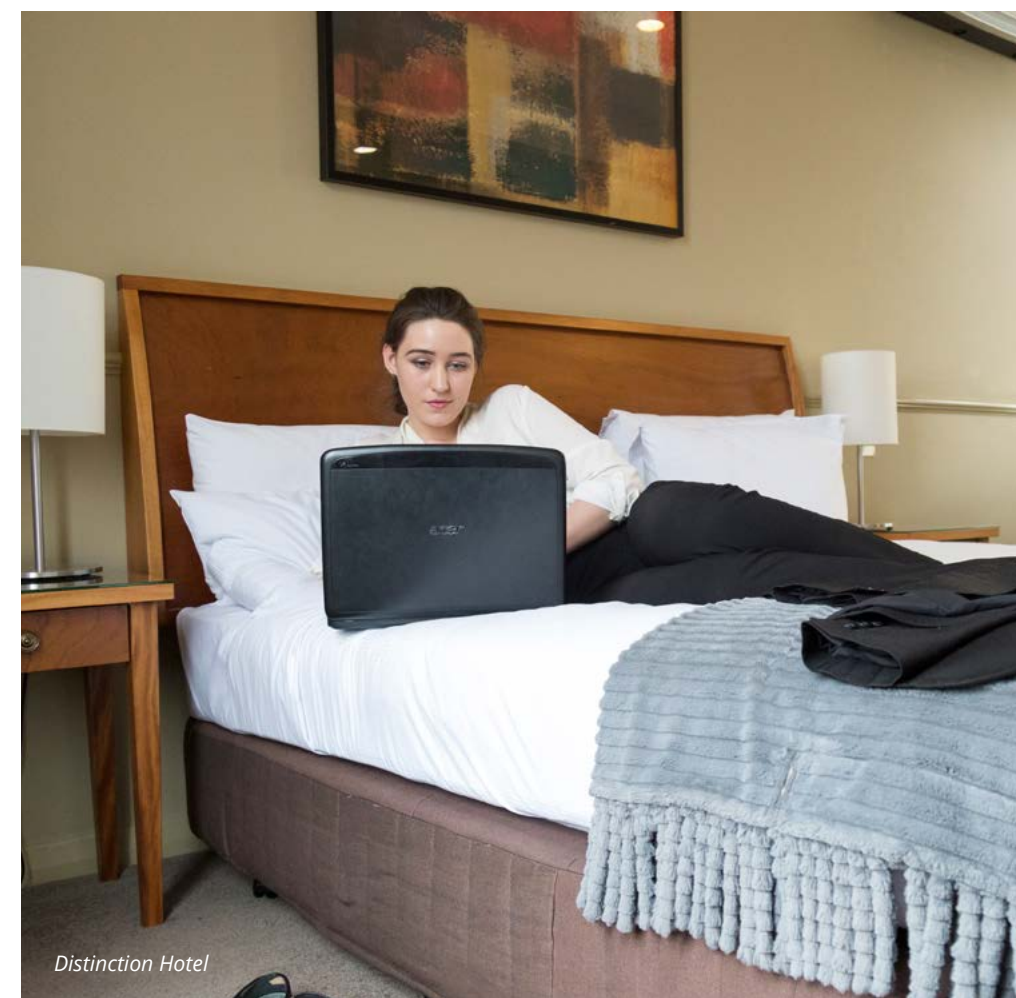
ACCOMMODATION

Palmerston North has a great range of hotels (up to 4+ star) and motels to cater for your conference delegates' every need. Or if you're searching for a more relaxing, refreshing pace then there are plenty of rural and exclusive retreats to chose from. With more than 35 conference venues in the city and nearby, more than 3,000 accommodation beds and support services, the City is well equipped to cater for your next event. The major hotels are:

Hotel Coachman	Distinction Hotel	Copthorne Hotel	Quest Apartments
72 rooms 3 min walk to CBD Restaurant & bars 24-hour reception 24-hour room service Free wireless internet Private spa pools & sauna Gym Guest laundry Free Carparking	85 rooms 2 min walk to CBD Restaurant & bars 24-hour reception 24-hour room service Free Unlimited Wifi Free Secure Carparking	89 rooms 2 min walk to CBD Restaurant & bar 24-hour reception 24-room service Internet access Gym Guest laundry Free Carparking	40 apartments In the CBD Laundry facilities (exc studios) Fully equipped kitchens 24-hour on-site management Internet access Access to off-site gym



Hotel Coachman



Distinction Hotel





ACTIVITIES

This is a sample of the great things available for delegates and their partners.

New Zealand Rugby Museum

The home of New Zealand rugby heritage and culture, the sport that shaped a nation. See some of the world's rarest rugby artefacts, including the first fern, the oldest rugby ball and a replica of the first All Black jersey. You'll be rewarded with a trip back in time exploring the rich history and folklore of the nation's game. Rugby fans can test their kicking, tackling, leaping, sprinting and pushing skills at the 'Have a Go' area. Options for functions available.

T +64 6 358 6947
www.rugbymuseum.co.nz

Mokai Gravity Canyon

Mokai Gravity Canyon is the ultimate extreme adventure playground set in a spectacular river canyon with an on-site café and shop. Choose one or all three thrilling activities – the 80m Bungy, the Giant Swing or the Flying Fox.

T +64 6 388 9109 or 0800 802 864
www.gravitycanyon.co.nz

The Herb Farm

The Herb Farm offers a natural, eco and feel-good experience in a rural retreat setting. As well as indulging in a refreshing walk through the gardens, a highlight of The Herb Farm is being able to purchase healing and chemical-free body products carefully made on-site, or book in for a group workshop, and make your own. Facilities include a beauty retreat and a café.

T +64 6 326 8633
www.herbfarm.co.nz

Colour Your Team

Jennifer Moss has created 'Colouring Lives with Music', a brilliant team building option, where in 30 minutes she will have your group all playing simple songs on the ukulele or playing an African drum! All instruments are provided.

E play@jennifersmusic.co.nz
www.jenniferemoss.co.nz/Jennifer_Moss/Colour_Your_Team

The Daly Larder, Cooking School

Whether you're looking for a vibrant, live cooking show or a hands-on workshop to hone your culinary skills, the Daly Larder private and corporate group cooking classes are a fun, unique, and affordable way to enjoy the company of friends, family, or co-workers at any culinary skill level.

T +64 21 103 9673
E info@thedalylarder.co.nz
www.thedalylarder.co.nz

Tui Brewery HQ

No trip to Mangatainoka, a short drive from Palmerston North City, is complete without a tour of this famous brewery. There is plenty to see, photo opportunities galore and even the Tui girls may be working. You even get a chance to sample some of their exclusive brews and steal your glass! Tui also offer a great golf package; why not play a round and then tour the brewery.

T +64 6 376 0815
E hq@tui.co.nz
www.tui.co.nz

Mangaweka Adventure Company

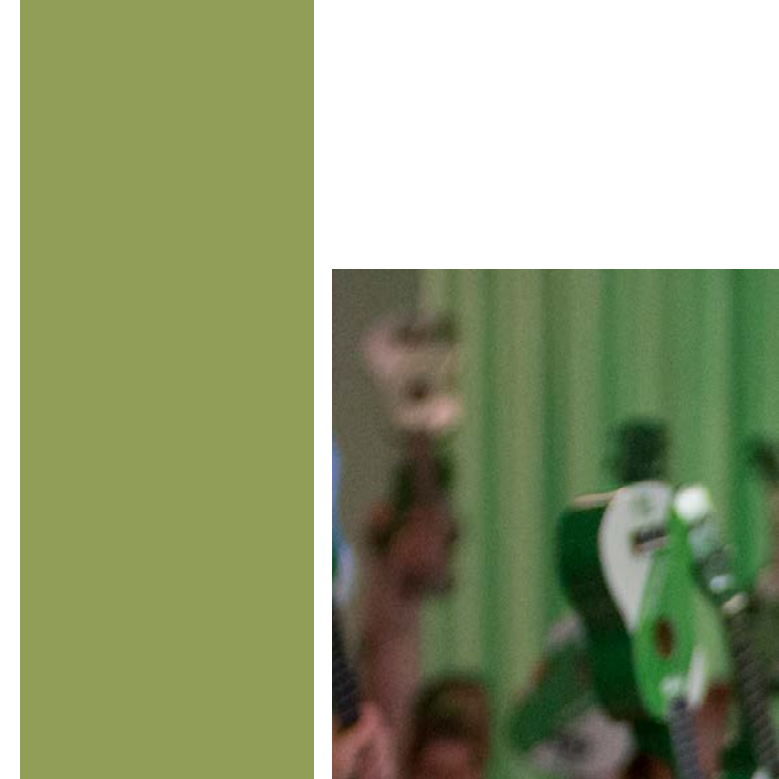
Running through the central lower North Island, the Rangitikei River is New Zealand's fourth longest river. Its deep impenetrable gorges are unique, and it serves up mild to wild adventures. Mangaweka Adventure Company offers a wide range of river activities, accommodation and facilities

T +64 6 382 5744
E info@mangaweka.co.nz
www.mangaweka.co.nz

NZCT Cricket Centre

The NZCT Cricket Centre, managed by ex Black Cap Jacob Oram, is the world's first in-door grass cricket specific training facility. The Centre gives the advantage of being able to train on grass pitches year round, no matter the weather outside. The centre is climate controlled, has a retractable-roof, and large enough for 12 cricket pitches and a fast bowlers full run-up. The Centre's team will work with you to offer a unique experience for your next function or to have some cricketing fun. Jacob is available as a speaker and to take training sessions.

E nzctcc@gmail.com
www.nzctcricketcentre.co.nz





Ebony Coffee – Tours and tastings

Learn more about the art of creating the perfect coffee with the passionate team at Ebony Coffee. Before you even step through their door you can smell the deep aroma of coffee.

Take a tour, taste their different blends, learn the process of roasting, you may even get the chance to make your own barista style coffee.

T +64 6 359 3300
E info@ebonycoffee.co.nz
www.ebonycoffee.co.nz

Ultimate Four-Wheel Driving Experience

Experience Makoura Lodges professionally designed 4WD, off-road testing and awareness facility in association with Toyota NZ. Head off-road and explore extreme terrain at this National Training Centre. Drive under the guidance of skilled instructors. No experience needed, all levels of driver will be challenged.

T +64 6 328 4746
E enquiry@makouralodge.co.nz
www.4wd-experience.co.nz



Ultimate Four-Wheel Driving Experience



Tatou Ltd - Aaron and Heather



Tatou Ltd - Aaron and Heather Freeman (MKR NZ 2014 Grand Finalists)

Let Aaron and Heather bring their passion, style, food and personalities to your function or business event. Specialising in Contemporary and Traditional Polynesian Cuisine, Aaron and Heather offer cooking demonstrations, fine dining pop-up restaurants, canape service, corporate events, festival popup, fundraiser, or public appearances.

E aaronandheather@tatou.co.nz
www.tatou.co.nz

Contact Details

P +64 6 350 1810
E phil@ManawatuNZ.co.nz
www.ManawatuNZ.co.nz

PALMERSTON NORTH
CONVENTION BUREAU





EVENTS

JANUARY



Gravel & Tar

Enter New Zealand's best multisurface cycle event. Ride on the same course and day as the elite riders for great prizes.



New Zealand Grand Prix

The Toyota New Zealand Grand Prix is 35 laps - 100km race distance. One of only two FIA Grand Prix held outside of Formula One.

MARCH



New Zealand Agri Investment Week

The New Zealand Agri Investment Week will create a time and place where people can meet to learn, collaborate and invest in New Zealand's Agri sector. The week will build on New Zealand Agricultural success by demonstrating our global competitive advantage. The inaugural New Zealand Agri Investment Week will be held between the 14th and 20th March 2016.

ENZED/Dewtec New Zealand Super Stock-car Teams Championship

The ENZED/Dewtec New Zealand Super Stock-car Teams Championship is the nation's premier speedway event, where the Palmerston North Panthers play host to other teams from around the country.



Charles Tour: Lawn Master Classic Pro-Am Golf Tournament

The tournament is the sixth event on the Charles Tour and hosted by the highly regarded Manawatu Golf Club. The Charles Tour, which was an initiative introduced by Greg Turner, attracts the country's leading professionals and amateurs, and has seen a number of players like Hendry, Mark Brown, Richard Lee and Ryan Fox progress to tours around the world.



Manawatu Walking Festival

The Manawatu Walking Festival brings together walkers from around New Zealand to experience the variety of great walks in Manawatu.



Festival of Cultures

A vibrant display of culture, colour, music, food and dance. There's a variety of local performances from Thailand, Cambodia, Ireland, China, Russia, Indian, Pacific Islands, Latin America and Japan to name a few. Food has always been a highlight of the festival with many community groups serving up their traditional dishes, or 'specialties' at the world food, craft and music fair.



Central Districts Field Days

Central Districts Field Days is the largest regional agricultural field days in New Zealand with more than 540 exhibitors and 38,000+ visitors over three days.

JUNE



International Jazz & Blues Festival

A week long event that everyone can get involved in, whether you're a seasoned jazz enthusiast, just beginning to learn what it's all about, or a complete stranger to these vibrant styles of music.



Manawatu Wine & Food Festival

This two day festival features wineries and boutique food suppliers from across the North Island, with live music from local musicians throughout the day.

AUGUST



Evento Wearable Arts

Evento Wearable Arts Awards has become an iconic event drawing audiences of over 2000 people. Enjoy this creative, popular and professional performance from these talented senior design students.

SEPTEMBER



International Spring Festival

The International Spring Festival is a unique, vibrant and innovative annual event that the people of Palmerston North proudly claim as their own way of celebrating the diversity of cultures. This event attracts both local residents and visitors to the City.

OCTOBER



Targa Rally

Targa New Zealand has become New Zealand's largest competitive rally series and the longest closed-tarmac road motorsport event in Australasia, spanning vehicles from 1950's to today.

NOVEMBER

Tour de Manawatu

The Lions' Tour de Manawatu Charity Cycle Challenge is held annually in November and attracts around 1000 riders, both local and from further afield.



Cross Hills Country Fair

This is Christmas shopping at its best. Shop amongst over 150 high quality gift stalls amongst the seven hectare gardens, with the finest collection of rhododendrons in bloom.

DECEMBER



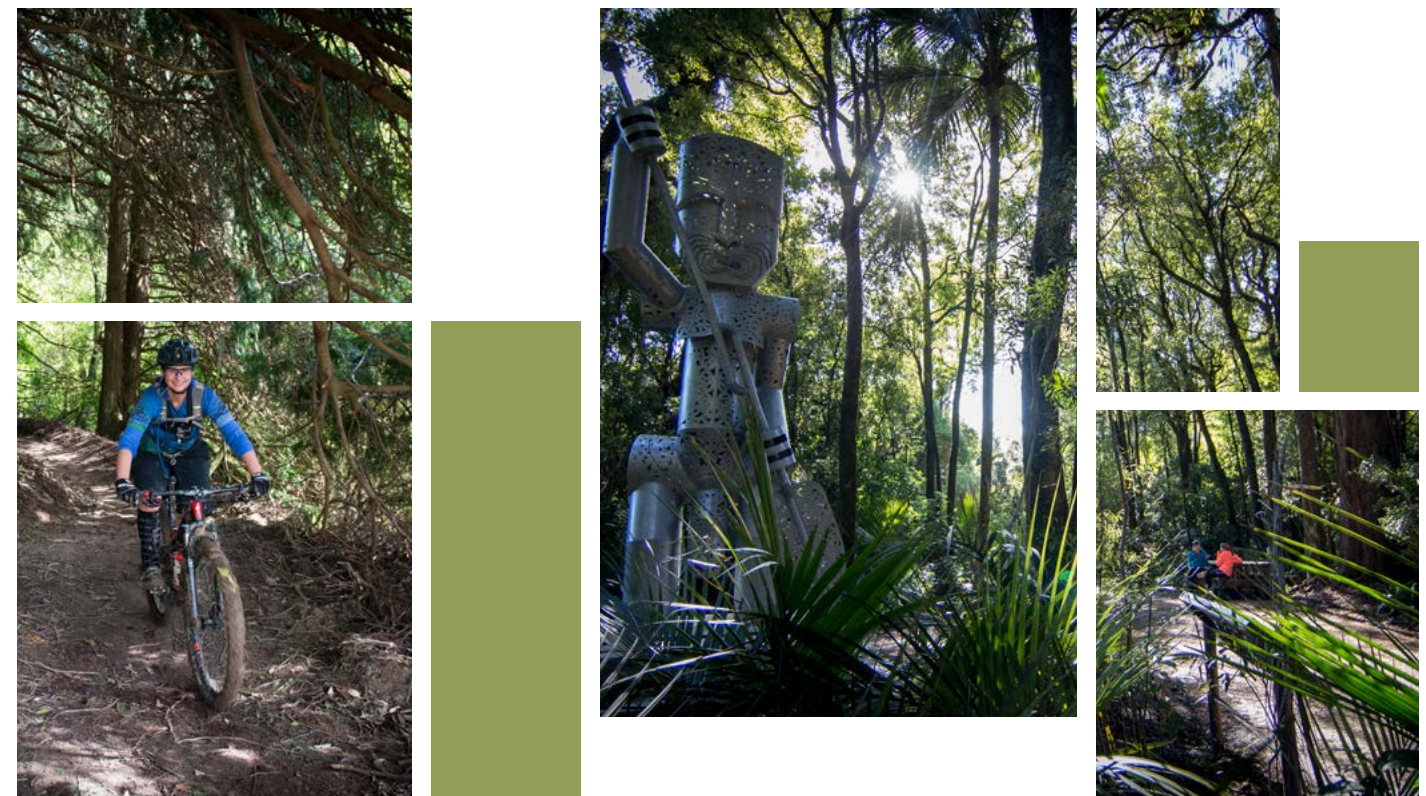
Hotel Coachman Manawatu Cup Day

This second Premier day offers another exciting race day at the Awapuni Racecourse. The course comes alive with thrilling race action including the Hotel Coachman Cup, live entertainment and plenty of on-course fun. The popular Manawatu Punter of the Year is also held on this day.



WELCOME TO TE APITI - MANAWATU GORGE

Te Apiti – Manawatu Gorge, just fifteen minutes from Palmerston North CBD, is a landmark of awe-inspiring legend, geographical magnificence and cultural wealth. The scenic divide between the Tararua and Ruahine Ranges that border the Manawatu Region, Te Apiti – Manawatu Gorge is a magnificent geographical structure formed over thousands of years by the Manawatu River. It is the only place in New Zealand where a river begins its journey on the opposite side of the main divide to where it joins the sea. With its native bush and wildlife, Te Apiti is a time capsule that preserves the bush that once covered Manawatu, a place frozen in time. A land steeped in legend. A land shrouded in myth. A land of the people. It doesn't matter how you experience its wonders – by foot, by rail or water. The only thing that matters is that you experience it for yourself. To experience Te Apiti, is to experience the spirit of a region.



Walking Tracks

Discover lush green forest on the southern side of the Gorge, walking over an undulating landscape, over bridged streams and under a dense tree top canopy to the soundtrack of native birds. Enjoy several viewing platforms that bring you high above the Gorge itself, with views over Tararua and Manawatu and beyond.

Manawatu Gorge Track - 10km, 3-5 hours one way
 Manawatu Gorge Tawa Loop – 4km, 1-2 hours
 Manawatu Gorge Loop Walk – 15 mins – 30 mins

Horse Trekking

Experience the magnificence of Te Apiti on horseback with a wide range of treks available. From short treks across farmland and through streams and rivers, to multi-day treks staying overnight in quaint huts and cosy campsites. For more information visit www.timelesshorsetreks.co.nz

Kayaking

One of the best ways to see the Gorge is by kayaking down the Manawatu River where you'll see first hand how magnificent this geographical structure really is. By experiencing Te Apiti – Manawatu Gorge with a paddle in hand, you will be taking the route taken by local Maori for many centuries. For more information and kayak hire.

www.q-kayaks.co.nz

Mountain Biking

The newest addition to Te Apiti – Manawatu Gorge is Te Aro o Mahurangi, an exciting new downhill mountain bike trail. This trail takes riders on a fast-paced downhill ride through 2km of native bush, and is rated an intermediate trail, or level 3.

Swimming Spots

Reserves at both ends of Te Apiti offer camping and safe swimming spots. The Woodville Ferry Reserve at Ballance Bridge offers easy access and freedom camping. Cool off in the warm weather, or pack a picnic and soak up the surroundings.

Eat

At the eastern side of Te Apiti, you'll find the quirky Bridge Cafe serving local cuisine, tasty coffee and mouth-watering milkshakes. In Ashhurst, the local Ashhurst Inn serves up hearty cuisine with a German twist, while Fusion Cafe is renowned for their Eggs Benedict, and their family friendly atmosphere with garden seating outdoors. In the Ashhurst Domain, the Wetlands Cafe offers great coffee and home-made cooking in a relaxed, tranquil setting.

Stay

Ashhurst Domain Campground provides an ideal base for families with playgrounds, on-site facilities and more. Freedom camping at the Woodville Ferry Reserve offers a chance to get back to nature, or for those wanting the comforts of home, Ashhurst Inn provides budget friendly accommodation in style.

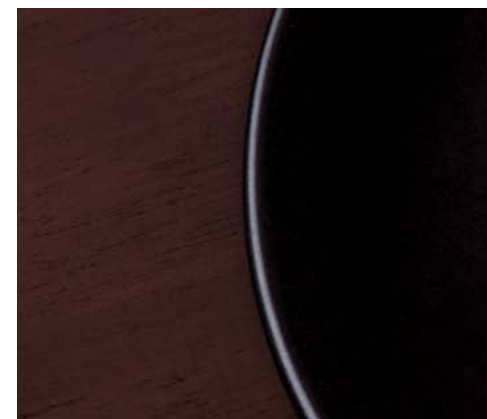
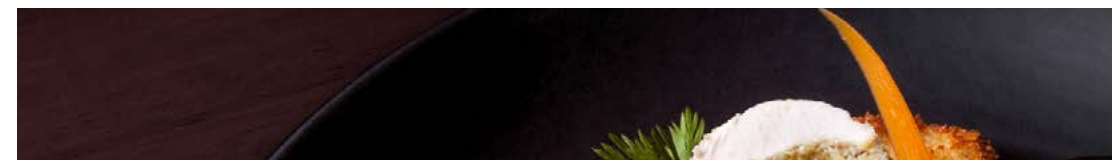


Table 188

DINING OPTIONS

Aberdeen on Broadway - Plate of Origin 2016

Serving a combination of the finest contemporary cuisine, an extensive wine list, ambience and exceptional service gives Aberdeen on Broadway the leading edge.

T +64 6 952 5570
www.aberdeensteakhouse.co.nz

Aqaba

Aqaba's innovative menu and true 'value for money' makes it the City's favourite brasserie. Open seven days a week for breakfast, brunch, lunch, dinner and light snacks or just a relaxing drink.

T +64 6 357 8922
www.aqaba.co.nz

Bangkok Thai

Bangkok Thai captures the essence of Thai cuisine and cook to suit your taste buds. Experience the best Thai in the City, in a friendly and relaxed atmosphere.

T +64 6 358 0280
www.bangkokthai.co.nz

Barista

In the heart of the art and theatre district this unique themed café delivers exceptional service and upmarket menus

including gluten-free options, blending international themes with New Zealand flavours.

T +64 6 357 2614
www.barista.co.nz

Bella's Café

In the middle of the City, Bella's Café, serves a mix of Italian, Thai and Pacific rim dishes, complemented with a stylish list of boutique wines and a sumptuous array of desserts.

T +64 6 357 8616
www.bellas.co.nz

Bethany's

Bethany's food includes an eclectic mix of English and Mediterranean food with some occasional Island surprises, making each dish a veritable feast for the senses.

T +64 6 351 6322
www.bethanys.co.nz

Brewers Apprentice

The Brewers Apprentice is a truly unique Gastro Bar with a mouthwatering menu that has a dedicated emphasis on the finest fresh ingredients.

T +64 6 358 8888
www.brewersapprentice.co.nz





Café Cuba

Café Cuba strive to bring you great food, a large variety of beverages and outstanding service, to make your experience a memorable one.

T +64 6 356 5750
www.cafecuba.co.nz

De Coree - Korean BBQ Restaurant

De Coree specialises in authentic Korean food, varying from the typical spicy and braisen meals to the more globalised dishes, both guaranteed to tantalise your taste buds.

T +64 6 354 1444

La Patio Café & Bar

The highly trained chefs have developed a selection of dishes for the menu using only the freshest of local and international produce. La Patio's style of cuisine is Mediterranean Pacific Rim.

T +64 6 356 5065
www.coachman.co.nz

Lone Star

With an atmosphere you can taste and their "Be Staunch, Walk Tall" attitude, Lone Star Café and Bar Palmerston North would love to be part of your next dining experience.

T +64 6 355 1986
www.lonestar.co.nz

Nero

Chef Proprietor, Scott Kennedy, is one of New Zealand's Lamb and Beef Ambassadors. Nero's combines stunning Victorian character with excellent food and service.

T +64 6 354 0312
www.cafenero.co.nz

Nosh

Nosh Restaurant serves a blend of local and international cuisine in an elegant modern setting, using the best local produce, accompanied by a great wine selection.

T +64 6 355 5895
www.distinctionhotels.co.nz/palmerston-north

Portafino

Proudly serving fresh, simple, delicious Italian food, complemented by a great glass of wine, Portafino offers a comfortable, home-like Italian setting where everyone is welcomed as family and friends.

T +64 6 355 5860
www.portofino.co.nz

Table 188

Table 188 is popular with lunch timers wanting to impress business partners while dinner is sophisticated and very worthy of a date-night spot. The food uses lots of local ingredients

with a flair for originality from the award winning chef, Ryan Marshall.

T +64 06 353 0076

The Elm

A relaxed atmosphere, excellent menu, and boutique wine list; with a beautiful garden courtyard, you can enjoy an Ozone coffee either indoors or outdoors.

T +64 6 355 4418

The Gallery

Food is art, and serving food takes aesthetic talent. A restaurant designed with a timeless theme of well-appointed décor, artwork, lighting and a private courtyard.

T +64 6 357 3944
www.the-gallery-restaurant.co.nz

The Speight's Ale House

With an excellent reputation for hearty southern fare, generous portions, and good old fashioned southern hospitality.

T +64 6 355 3482
www.speightspalmerstonnorth.co.nz

The Fat Farmer

The Fat Farmer introduces a taste of rural Manawatu into the

heart of Hokowhitu. Where possible all the produce is sourced fresh from local growers.

T +64 6 358 4999

Yatai

Yatai is an Izakaya, Japanese Pub, a place to gather with friends, family and colleagues; in an interactive way of eating and drinking at your own leisure. Share and experience flavours in this unique setting.

T +64 6 356 1316
www.yatai.co.nz

Yeda

Specialising in grill and all day dim sum, the talented chefs fuse traditional Asian ingredients with fresh New Zealand produce to create delicious dishes. Stay for the experience.

T +64 6 358 3978
www.yeda.co.nz

Jimmy Cook's Kiwi Kitchen

Whether you're pining for a hearty breakfast, healthy lunch or a Kiwi favourite for dinner and dessert, Jimmy Cook's Kiwi Kitchen has a dish to delight even the most seasoned food critics.

T +64 6 356 8059
www.millenniumhotels.co.nz





A SELECTION OF COFFEE

Thorne Coffee

Serving award winning Hawthorne Coffee, fresh-baked brioche and treats, you will not be disappointed by their selection. Thorne Coffee is right next to Thorne Clothing, on George Street – you won't miss its groovy, laid back feeling, complete with couches on the footpath.

48 George St
T +64 6 260 3132

Moxies Café

Moxies is a vibrant cafe, with a relaxed atmosphere and extremely friendly service, offering a selection of menu's including an all day breakfast menu, a brunch/lunch menu, a gluten free menu, and just recently added dairy free menu. They also offer a fantastic selection of cabinet food and are a fully licensed café.

67 George St
T +64 6 355 4238

Café Cuba

Centred in the heart of Palmerston North, Cafe Cuba is seen to be an iconic local spot to grab your next breakfast, lunch, dinner, coffee or alcoholic beverage. With a large menu that caters to a wide range of people, there is something on their menu that will tempt your taste buds.

236 Cuba St
T +64 6 356 5750

Café Express

Right on the corner of The Square where the sun catches the footpath you'll find Café Express. The Café Express staff are there ready to tempt you with delicious food lovingly prepared.

41 The Square
+64 6 353 8440

Barista

In the heart of the Art & Theatre district this unique themed cafe delivers exceptional service and upmarket menus including gluten-free options, blending international themes with New Zealand flavours and the freshest ingredients.

59 George St
+64 6 357 2614

Stage Door Café

The Stage Door Café is one of Palmerston North City's most popular cafes. Sit in the comfy seating by the counter, the retro furniture in the quiet seating out back, or dine outside in the sunshine.

Cnr King St and Regent Arcade
+64 6 359 2233



PROFESSIONAL SERVICES

We want your next conference in Palmerston North to be a great success. The city has plenty of local experts whose knowledge and products will ensure that you deliver an unsurpassed event experience for your delegates in Palmerston North.

Sue Peck
SP Conference Management
T +64 6 357 1466
E suepeck@xtra.co.nz
www.spconferences.co.nz

SP Conference Management offers professional and friendly service second to none for conference and convention organisers.

Rosemary Hancock
Evenements - Conference and Events Management
T +64 21 217 8298
E evenements@xtra.co.nz

Conference and event management from conception to completion anywhere in New Zealand.

Nicky Vallender
Event-it - Conference Management
T +64 21 033 5605
E nicky@eventit.co.nz
www.eventit.co.nz

At Event-It , Event and Conference Management they understand the power of face-to-face networking, and strive to make your event the best possible forum to share, educate and inspire!

Im-Press Promotions
Promotional Products
T +64 6 357 9297
E info@im-presspromotions.co.nz
www.im-presspromotions.co.nz

Im-press Promotions specialize in supplying quality promotional merchandise for company awareness, sales promotions, brand awareness, corporate gifts, advertising penetration at competitive prices.

i-SITE Palmerston North City
Free information for visitors
T +64 6 350 1922
E info@ManawatuNZ.co.nz
www.ManawatuNZ.co.nz

i-SITE Palmerston North City, the official source of visitor information for Palmerston North and the Manawatu region, and an accredited member of New Zealand's Visitor Information Network endorsed by Tourism New Zealand. The i-SITE team provide travel advice and bookings for destinations throughout New Zealand.

Image Group NZ
Staging, Lighting, Audio Visual
T +64 27 658 8397
E info@imagegroupnz.co.nz
www.imagegroupnz.co.nz

Accessing all the services and information needed to present a great performance can be a daunting undertaking. Ensure a smooth and successful delivery of your project by utilizing Image Group NZs' experienced technicians coupled with their inventory of modern leading edge equipment.

Audio Progress
Staging, Lighting, Audio Visual
T +64 6 27 443 5896
E info@audioprogress.co.nz
www.audioprogress.co.nz

It is no coincidence that the staff at Audio Progress have skill sets in design and engineering and backgrounds in music and theatre. Providing the best production and service for any event is paramount. Therefore each staff member has a keen interest in achieving the best solutions for any event - whether it be for audio, staging or lighting.

Image Audio
Audio Visual
T +64 6 357 1969
E info@imageaudio.co.nz
www.imageaudio.co.nz

At the push of a single button, the window shades lower, a screen and a digital projector drop from the ceiling, the lights lower, and a digital video conference begins. Utilising proven products and clever design, Image Audio can assure your presentation is seen and heard to the standard intended.

Meraki Catering
Catering
T +64 6 355 4955
E merakicatering@outlook.com

Meraki is a Greek word that's definition is, 'the soul, creativity or love put into something; the essence of yourself that is put into your work' and at Meraki Catering, this is the essence of their business. Meraki Catering offers the perfect catering for your event, working to what suits your needs, including to sculpt a menu and experience that works for you. Specializing in picnic weddings, bespoke cakes, business meeting lunches and canapés. With food crafted by hand, using only the best local produce, they offer a unique catering experience.

Event Tech
Audio Visual
T +64 800 356 656
E chris@Event-Tech.co.nz
www.Event-Tech.co.nz

The ability to cross over from good sound to video conferencing using the internet, video and video conferencing. Event Tech have the technology and knowledge to get your event right.

Pathfinders Tours NZ
Transport
T +64 27 5827113
E mail@pathfindertours.co.nz
www.pathfindertours.co.nz

Pathfinder tours and SNOMAD Adventures have a commitment to provide you with quality tours, custom made to suit your needs, with comfort service and style being the primary goal.

Coachline Ltd
Transport
T +64 6 357 0903
E info@pncl.co.nz
www.uzabus.co.nz

Palmerston North Coachlines are proud of its history, providing tour coach services to a client base of regular users as well as gaining new customers through competitive quoting and quality service.

Tranzit Coachlines
Transport
T +64 6 355 4955
E pmr@tranzit.co.nz
www.tranzit.co.nz

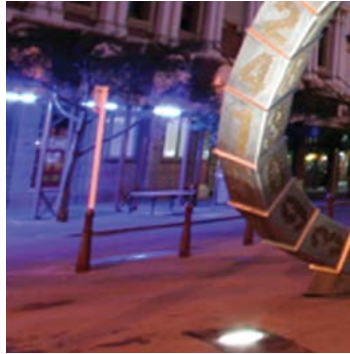
Specialising in bus and coach hire for group tours, corporate charters, conference groups, school & sport groups, across town transfers, cruise ship excursions, day trips, weddings and special events.

Novo Imaging
Photography
T +64 21 078 1524
E kelvin@novoimaging.co.nz
www.novoimaging.co.nz

At Novo Imaging, they are not just about taking photographs, they are about telling the story that is right for you. With the unparalleled creative flair and professionalism, there is no one else you would want to capture your event.

Kevin Bills Photography
Photography
T +64 6 357 8757
E info@kbphotography.net.nz
www.kbphotography.net.nz

Kevin Bills Photography was established twelve years ago and has evolved into the Manawatu Region's most skilled and unique photographic business. With the ability to capture a vast range of imagery from bold and dynamic commercial work to exquisite weddings and stunning portraiture, they possess an abundance of experience and skill and love what they do.



TESTIMONIALS

NZ Defence Force

Venue – Palmerston North Convention Centre

The Palmerston North Convention Centre provided good value for money and a great central location. Staff were very helpful throughout the whole process, and flexible to our changing needs.

Kevin Williams

Conference Organiser

Beef + Lamb New Zealand

Venue – Awapuni Function Centre

Thank you all for being such a fantastic team to work with. You really made my job easy as the Event Manager for the Beef+Lamb NZ Aginnovation Conference. The feedback for the event highlights the success it was, which couldn't have been achieved without you all. Thanks so much,

Mel Poulton

Event Manager

NZ Association of Language Teachers

Venue – Palmerston North Convention Centre

The venue is well equipped and provides the support of a truly professional staff. The catering exceeded our expectations, and catering staff were willing to accommodate changes with a smile. The venue is centrally located and provided an ideal mix of breakout venues. It provided the basis for an outstanding conference.

Gunhild Litwin

Conference Organiser

Bridgestone New Zealand Ltd

Venue – Copthorne Hotel

I have used Copthorne Palmerston North conference facilities a great many times and have always been extremely satisfied with the quality of facilities and service.

The catering is to a high standard and the staff extremely efficient and responsive to short/no notice requests. Nothing is ever a problem for these guys and that's what you want to hear when you're running a conference or training session.

Cameron Gay

L&D Manager

Rabobank NZ Limited

Venue –Awapuni Function Centre

We have used Creative Catering on many occasions from large corporate dinners to small intimate dinners. Heather has always been outstanding to deal with and nothing is ever a problem. There is a very extensive menu to choose from and the food has always been extremely well presented, fresh and tasty. Creative catering also help with AV, event design and always provide great ideas and advice on aspects of our functions. All the staff are well presented and customer service has always been exceptional. Creative Catering pay attention to detail and are always prepared to go the extra mile. We would have no hesitation in recommending Lewis, Heather and the team at Creative Catering for any event.

Stella Rackham

Business Development Coordinator

Te Wānanga o Aotearoa Gradutation

Venue – Awapuni Function Centre

Entering now into our fifth year of booking the Awapuni Racecourse / Creative Catering for our annual regional graduation ceremony, the professional friendly service, fantastic catering and large modern facilities are second to none in Manawatu.

Planning is made easy by Lewis / Heather and the team and the delivery is always exceptional. The perfect place and team for large professional or formal events without the fuss or cost.

Damian McGregor

Regional Graduation Co-ordinator

Graffiti Events

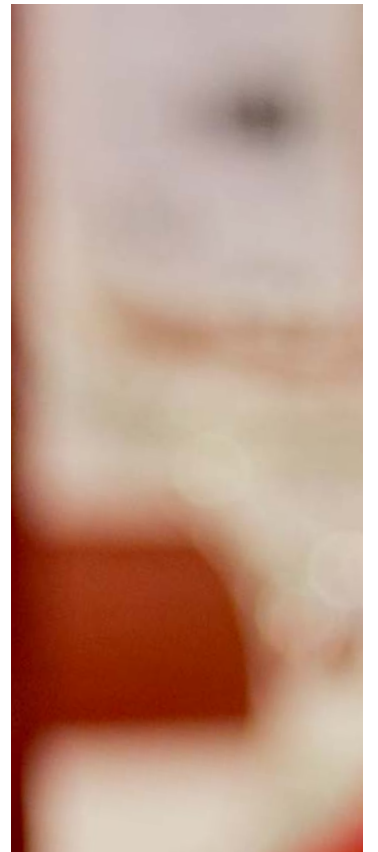
Venue – Hokowhitu Function Centre

The Palmerston North leg of this nationwide roadshow was unquestionably the best venue experience we had across 6 different destinations, with superior conference facilities, exceptional food quality and fantastic service from your staff. It was a general topic of conversation following this event, that your staff were incredibly friendly, attentive and helpful and the quality of the canapés far eclipsed anything we had anywhere else.

In this day and age it is not often positive experiences and feedback are ever passed on, but we all felt that in the case of the Hokowhitu Function Centre it would be remiss of us not to congratulate you on a superb event experience and I can assure you we will be back in the very near future.

Adam Leslie

Graffiti Events





Produced June 2016 by

PALMERSTON NORTH
CONVENTION BUREAU

www.ManawatuNZ.co.nz

PALMERSTON NORTH CITY
& *Manawatu*