

CEDA

DATA FOR JULY & AUGUST 2017.

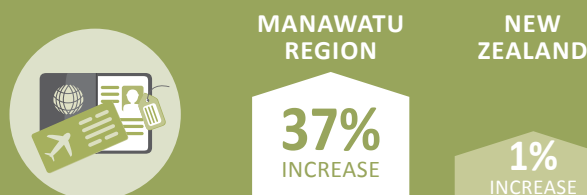
Published in September 2017.

Central Economic Development Agency (CEDA) drives and facilitates the creation and growth of economic wealth in Palmerston North and Manawatu.

CEDA publishes these figures for a pulse of the local business community, alongside engagement with various parts of the community to better understand the strengths we can build on, the weaknesses we can improve and barriers we can bring down.

MANAWATU REGION GROWTH INDICATORS

OVERSEAS NET MIGRATION (THREE MONTHS ENDED AUGUST 2017)



NEW CAR REGISTRATIONS (THREE MONTHS ENDED AUGUST 2017)



AVERAGE HOUSE VALUES (THREE MONTHS ENDED AUGUST 2017)

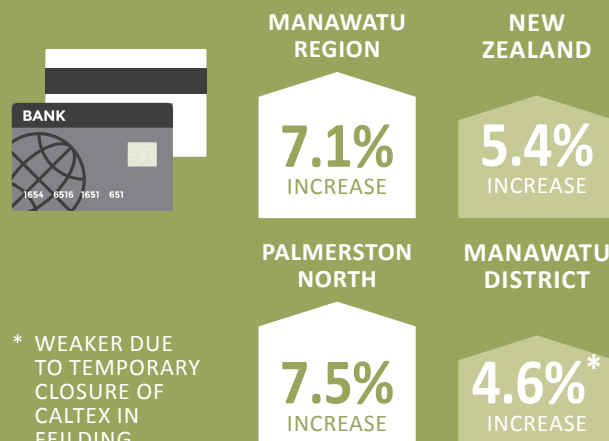


AVERAGE RENTS (YEAR ENDING AUGUST 2017)



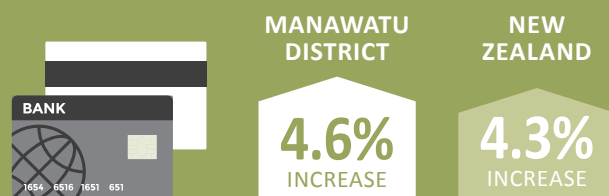
ELECTRONIC CARD RETAIL SPENDING

(AUG 2017 COMPARED TO AUG 2016)



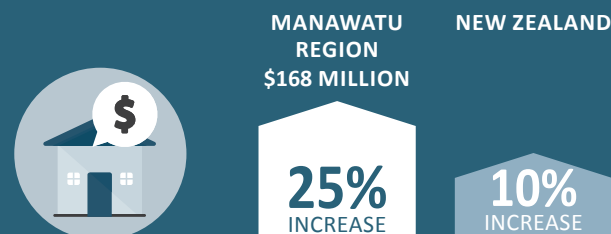
* WEAKER DUE TO TEMPORARY CLOSURE OF CALTEX IN FEILDING.

(THREE MONTHS ENDED AUGUST 2017)

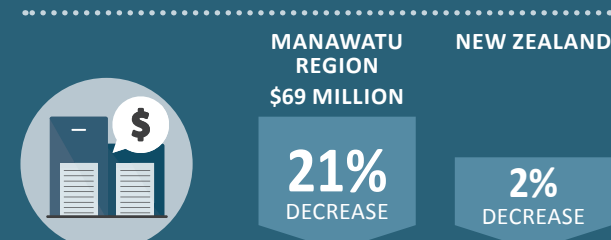


BUILDING CONSENTS

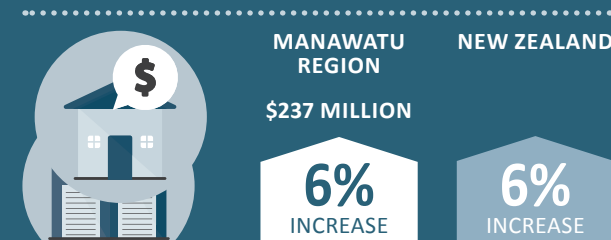
(YEAR ENDING JULY 2017 COMPARED WITH YEAR ENDING JULY 2016)



RESIDENTIAL VALUE



NON RESIDENTIAL VALUE



TOTAL VALUE

TOURISM SPENDING

(YEAR ENDING JULY 2017 COMPARED WITH
YEAR ENDING JULY 2016)



MANAWATU
REGION

4%
INCREASE

NEW
ZEALAND

6%
INCREASE

TOTAL TOURISM SPENDING