



## June and July 2017

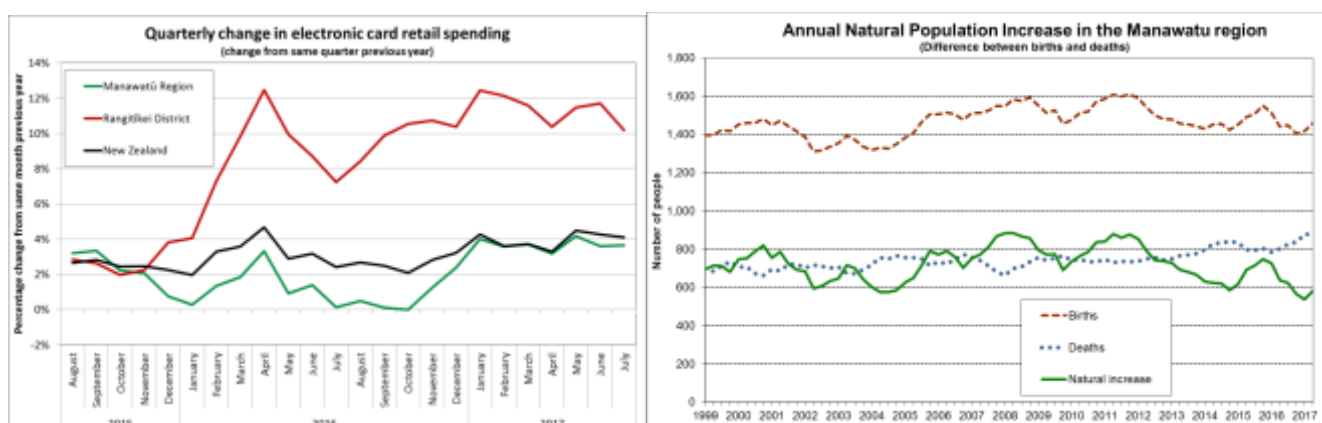
Published August 2017

### Electronic Card Retail Trade Spending (July 2017)

Retail spending in the Manawātū region increased by 3.1% in July while there was a 2.9% increase for New Zealand. Retail sales in Palmerston North increased by 3.6% from July 2016, and Manawātū District increased by 0.1%.

The weakness in Manawātū District retail spending is due to the short-term closure of the Caltex in Feilding while it is rebuilt. Fuel expenditure in Manawātū District declined by 10.8% in July from July 2016. Retail expenditure growth in the region has been mostly below the national growth rate since November 2015, reflecting the impact of retail developments in Rangitīkei District, particularly in Bulls.

Visitor oriented sectors were weak in the Manawātū region in July, following strong growth in July 2016. Accommodation spending in July declined by 7.0%, bars/cafes/restaurants declined by 0.6% and takeaways spending increased by 7.4%. (Source: Marketview)



Source: Marketview / Statistics New Zealand

### Births and Deaths (Year ended June 2017)

Natural population growth in the region (the difference between the number of births and deaths) was 582 people in the year to June 2017, a decline of 57 people from 2016 (when there was a gain of 639 people in the year to June 2016). There were 1,461 births in the Manawātū region in the year to June 2017, an 1.5% increase from 2016.



The number of deaths in the region increased by 9.7% from 2016, with 879 deaths recorded in the year to June 2017.

There was a 1.1% decline in the number of births in New Zealand in the year to June 2017 and a 3.0% increase in the number of deaths, resulting in a 5.8% decline in natural population growth. (Source: Statistics New Zealand)