



Data for September 2017

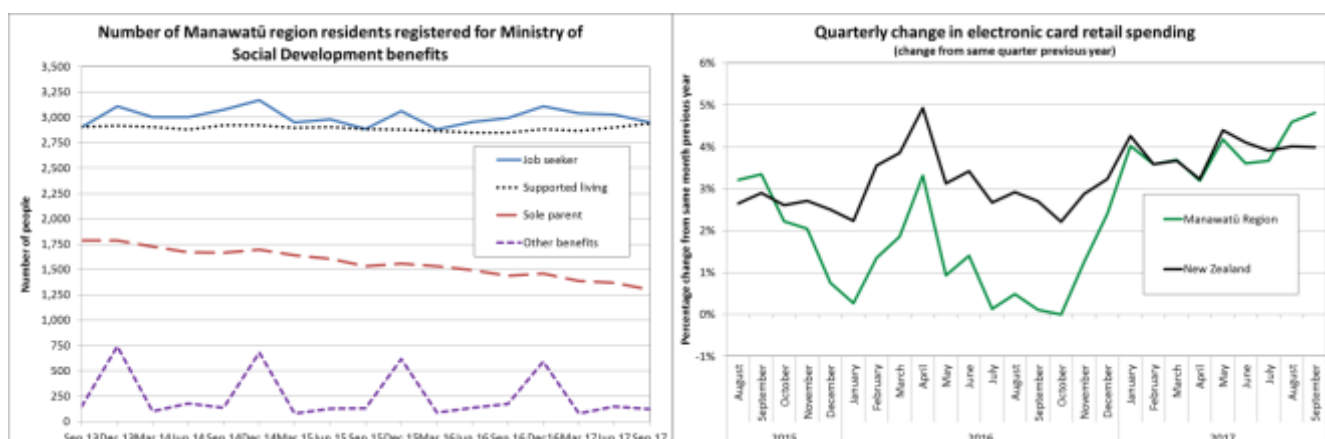
Published in October 2017

There is a 14 month delay in the publication of employment data for the Manawātū region, so insights on the state of the labour market provided by MSD benefits data are useful. The latest benefits data shows 1.9% decline between September 2016 and September 2017, with 139 less Manawātū region residents registered for benefits, while national benefit numbers declined by 2.3%.

Ministry of Social Development Benefits

The number of Manawātū region residents receiving the Jobseeker support benefit declined by 1.4% between September 2016 and September 2017, a decline of 41 people over the 12 month period. Palmerston North experienced a decline of 3.4%, while Manawātū District increased by 6.8%. Nationally, the number of people registered for the Jobseeker benefit declined by 1.3% over the past 12 months.

There were 135 less people in the region receiving the sole parent support benefit (9.4% decline), 54 less people receiving emergency and hardship benefits (31% decline) and 91 more people receiving the supported living payment (3.2% increase). (Source: Ministry of Social Development).



Source: Ministry of Social Development / Marketview

Electronic Card Retail Trade Spending

Electronic card retail spending (debit and credit card) in the Manawātū region increased by 4.8% in the September quarter compared with the September 2016 quarter while New Zealand retail spending increased by 4.0%. Spending increased by 5.1% in Palmerston North but declined by 2.9% in Manawātū District.