

Monthly Economic Update

August 2018

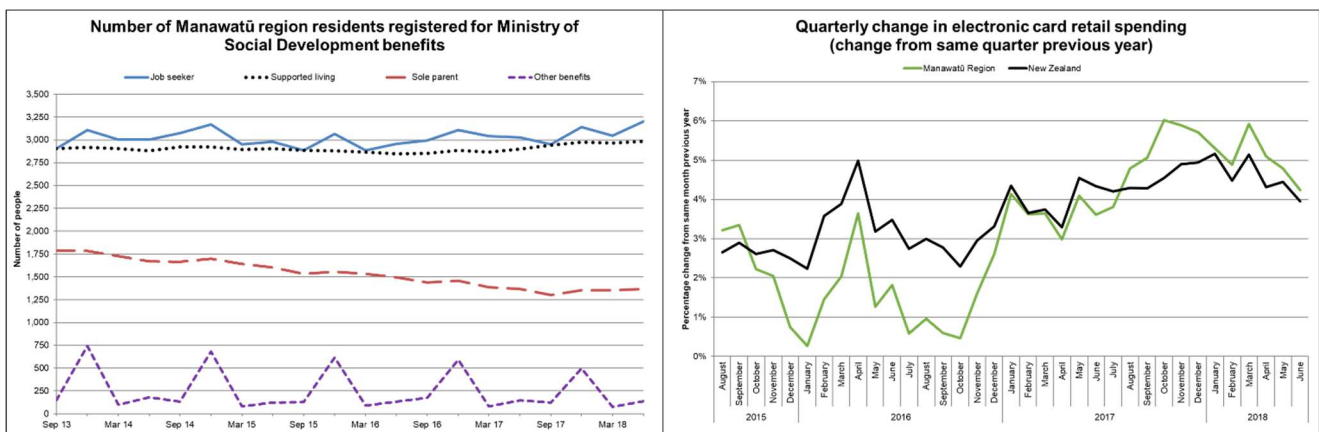
(data for June 2018)

There is a 14-month delay in the publication of quarterly employment data for the Manawātū region, so insights on the state of the labour market provided by MSD benefits data are useful. The latest data shows benefit numbers in the region increased by 3.3% between June 2017 and June 2018, while national benefit numbers increased by 0.4%. There were 7,690 people registered for a benefit in the region in June, an increase of 244 people from June 2017.

Ministry of Social Development Benefits

The number of Manawātū region residents receiving the Jobseeker support benefit in June 2018 increased by 5.7% from June 2017, an increase of 173 people over the 12-month period. Palmerston North experienced an increase of 9.1%, while the number in Manawātū District declined by 6.5%. Nationally, the number of people registered for the Jobseeker benefit increased by 3.1% between June 2017 and June 2018.

There was 1 more person in the region receiving the sole parent support benefit (0.1% increase), 10 less people receiving emergency and hardship benefits (6.7% decline) and 82 more people receiving the supported living payment (2.8% increase). (Source: Ministry of Social Development)



Source: Ministry of Social Development / Marketview

Electronic Card Retail Trade Spending

Electronic card retail spending (debit and credit card) in the Manawātū region increased by 4.2% in the June quarter compared with the June 2017 quarter while New Zealand retail spending increased by 4.0%. Spending increased by 3.4% in Palmerston North and by 9.1% in Manawātū District. (Source: Marketview)