

CEDA

DATA FOR AUGUST AND SEPTEMBER 2017

Published in October 2017.

Central Economic Development Agency (CEDA) drives and facilitates the creation and growth of economic wealth in Palmerston North and Manawatu.

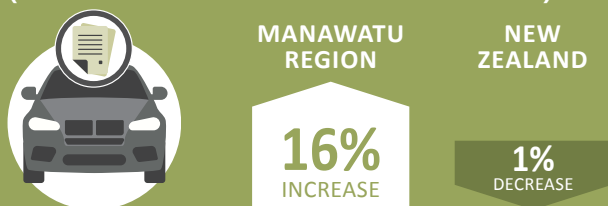
CEDA publishes these figures for a pulse of the local business community, alongside engagement with various parts of the community to better understand the strengths we can build on, the weaknesses we can improve and barriers we can bring down.

MANAWATU REGION GROWTH INDICATORS

OVERSEAS NET MIGRATION (THREE MONTHS ENDED SEPTEMBER 2017)



NEW CAR REGISTRATIONS (THREE MONTHS ENDED SEPTEMBER 2017)



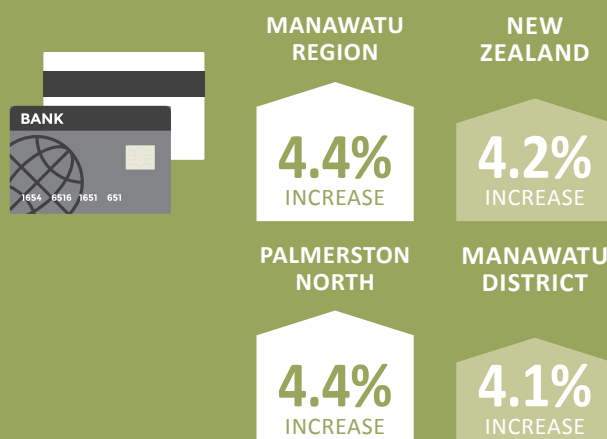
AVERAGE HOUSE VALUES (THREE MONTHS ENDED SEPTEMBER 2017)



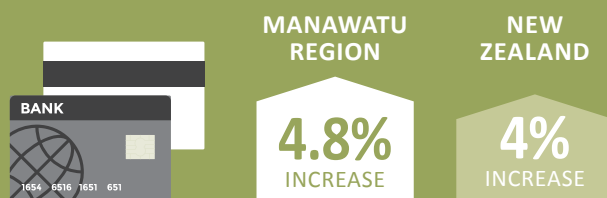
AVERAGE RENTS (YEAR ENDING SEPTEMBER 2017)



ELECTRONIC CARD RETAIL SPENDING (SEPT 2017 COMPARED TO SEPT 2016)

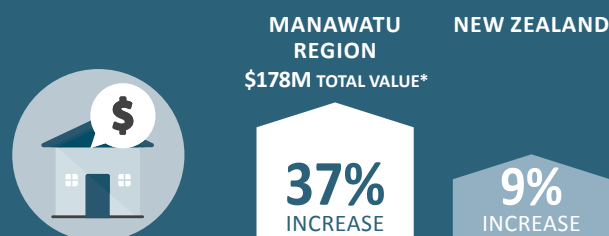


(SEPT 2017 QUARTER COMPARISON)

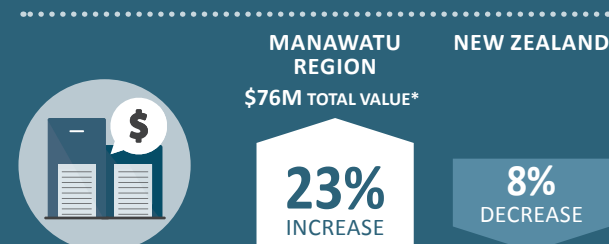


BUILDING CONSENTS (3 MONTHS ENDED AUG 2017)

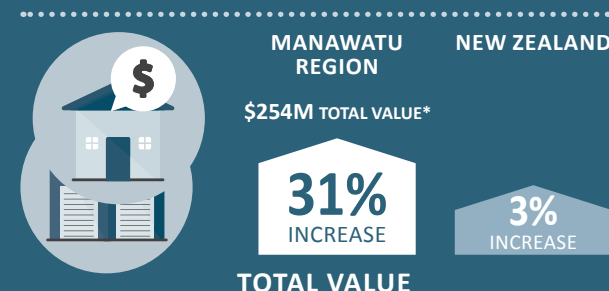
*TOTAL VALUES ARE FOR YEAR ENDED AUG 2017



RESIDENTIAL VALUE



NON RESIDENTIAL VALUE



TOTAL VALUE

*SOURCE: QV, STATISTICS NZ, PNCC AND MBIE)

TOURISM SPENDING

(YEAR ENDING AUG 2017)



MANAWATU
REGION

5%
INCREASE

NEW
ZEALAND

7%
INCREASE



DOMESTIC

5%
INCREASE

INTERNATIONAL

6%
INCREASE