

CEDA

DATA FOR DECEMBER 2017 AND JANUARY 2018.

Published in February 2018.

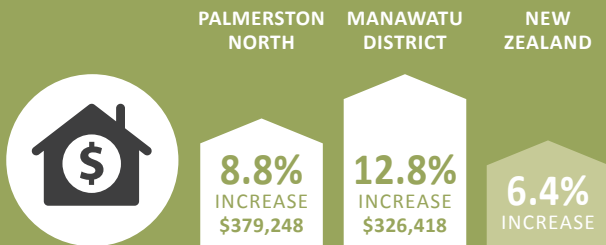
Central Economic Development Agency (CEDA) drives and facilitates the creation and growth of economic wealth in Palmerston North and Manawatu.

CEDA publishes these figures for a pulse of the local business community, alongside engagement with various parts of the community to better understand the strengths we can build on, the weaknesses we can improve and barriers we can bring down.

HOUSING

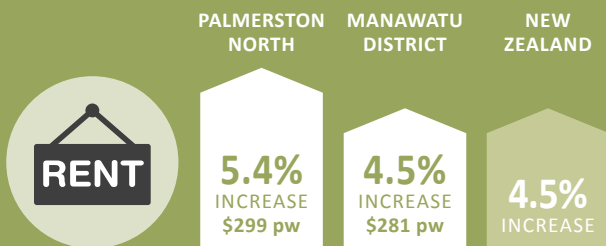
AVERAGE HOUSE VALUES

(% AND \$ VALUES THREE MONTHS ENDED JANUARY 2018)



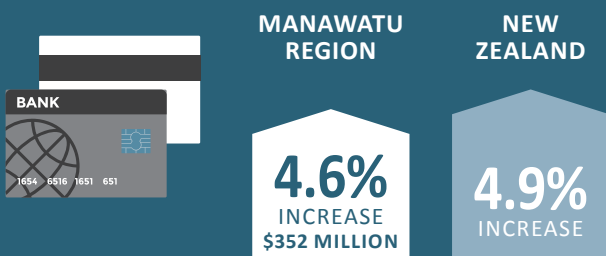
AVERAGE RENTS

(% AND \$ VALUES YEAR ENDING DECEMBER 2017)



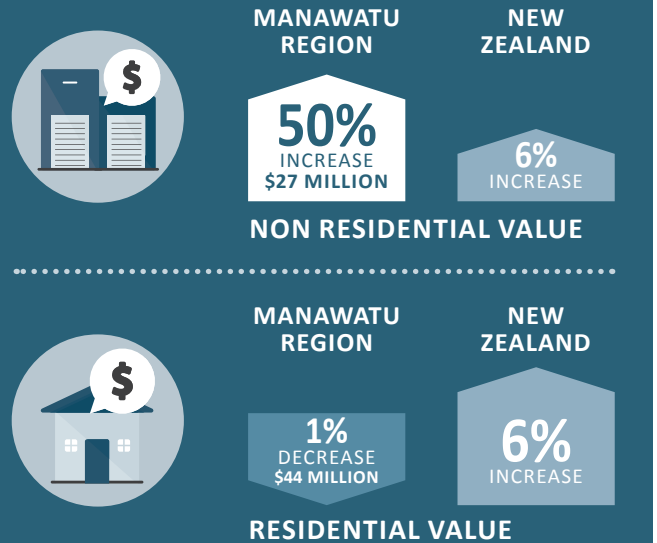
ELECTRONIC CARD RETAIL SPENDING

(% AND \$ THREE MONTHS ENDED JANUARY 2018)



BUILDING CONSENTS

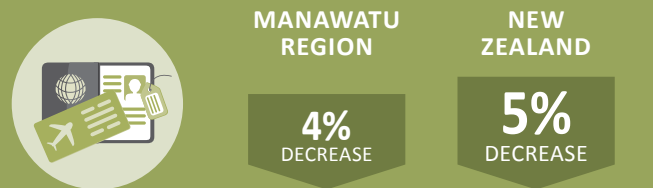
(% AND \$ VALUES THREE MONTHS ENDED DECEMBER 2017)



GROWTH INDICATORS

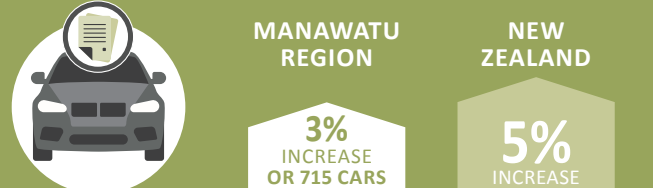
OVERSEAS NET MIGRATION

(THREE MONTHS ENDED DECEMBER 2017)



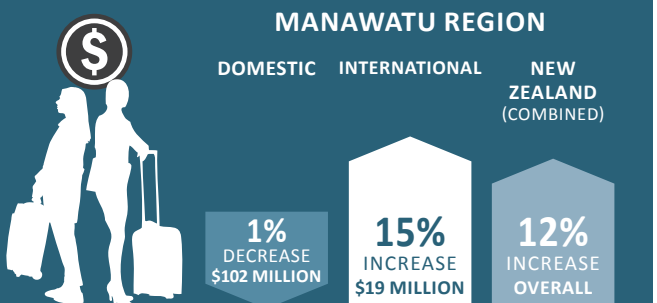
NEW CAR REGISTRATIONS

(THREE MONTHS ENDED JANUARY 2018)



TOURISM SPENDING

(% AND \$ THREE MONTHS ENDED DECEMBER 2017)



*SOURCE: NZTA, QV, REINZ, MARKETVIEW, STATISTICS NEW ZEALAND, MBIE.