

CEDA

DATA FOR OCTOBER AND NOVEMBER 2017.

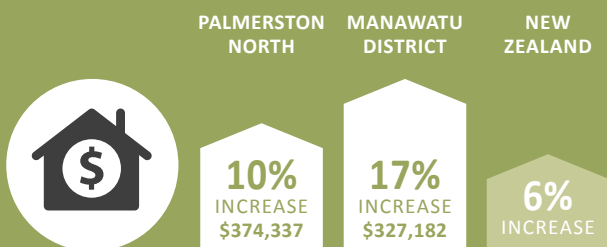
Published in January 2018.

Central Economic Development Agency (CEDA) drives and facilitates the creation and growth of economic wealth in Palmerston North and Manawatu.

CEDA publishes these figures for a pulse of the local business community, alongside engagement with various parts of the community to better understand the strengths we can build on, the weaknesses we can improve and barriers we can bring down.

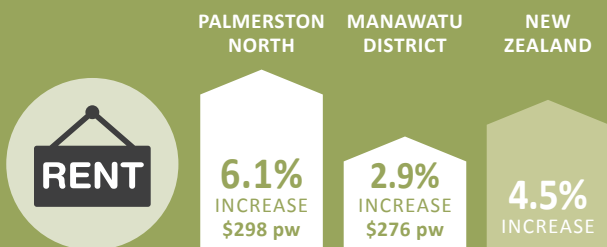
HOUSING AVERAGE HOUSE VALUES

(% AND \$ VALUES THREE MONTHS ENDED NOVEMBER 2017)



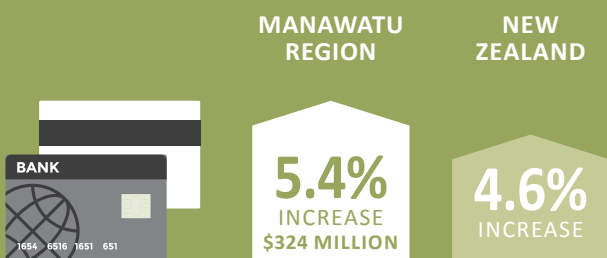
AVERAGE RENTS

(% AND \$ VALUES YEAR ENDING NOVEMBER 2017)



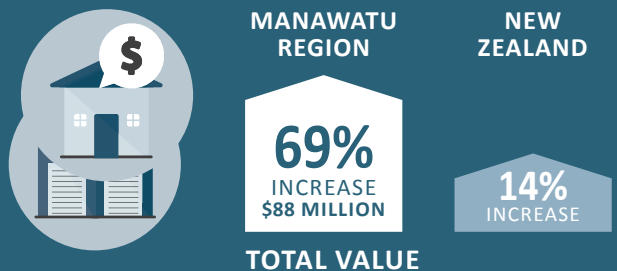
ELECTRONIC CARD RETAIL SPENDING

(% AND \$ THREE MONTHS ENDED NOVEMBER 2017)

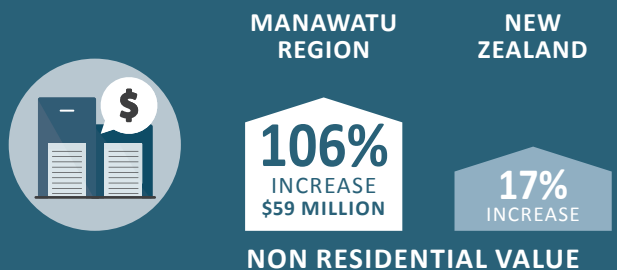


BUILDING CONSENTS

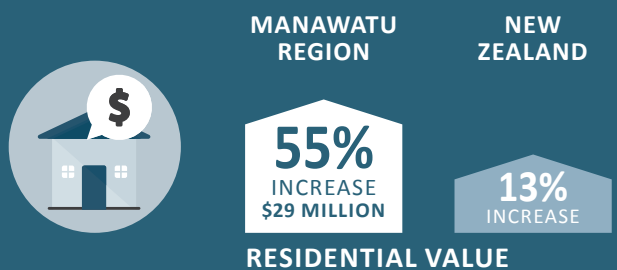
(% AND \$ VALUES THREE MONTHS ENDED OCTOBER 2017)



TOTAL VALUE

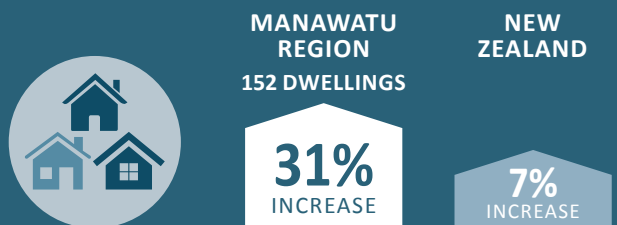


NON RESIDENTIAL VALUE



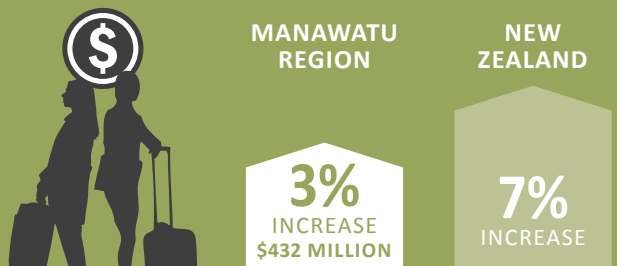
RESIDENTIAL VALUE

NEW DWELLINGS



TOURISM SPENDING

(% AND \$ YEAR ENDED OCTOBER 2017)



TOTAL TOURIST SPEND

*SOURCE: REINZ, STATISTICS NEW ZEALAND & NZTA.